



D6/D6 XE

Track-Type Tractors

Technical Specifications

Configurations and features may vary by region. Please consult your Cat® dealer for availability in your area.

Table of Contents

D6/D6 XE Track-Type Tractor

| | | | |
|-----------------------------------|----------|--|-----------|
| Specifications | 3 | D6/D6 XE LGP VPAT (30 in) | 10 |
| Engine | 3 | Blade | 10 |
| D6 XE Drive Train | 3 | D6/D6 XE LGP VPAT (36 in) | 11 |
| Fluid/Refill Capacities | 3 | Blade | 11 |
| Maximum Drawbar Power | 4 | D6/D6 XE LGP Folding VPAT (30 in) – <i>EU only</i> | 12 |
| D6 Travel Speed | 4 | Blade | 12 |
| D6 XE Travel Speed | 4 | Dimensions – Rear Attachments | 13 |
| Hydraulic Controls: | | Ripper | 13 |
| Maximum Operating Flows | 5 | Blade Cutting Edges | 13 |
| Maximum Operating Pressures | 5 | Winches | 14 |
| Steering | 5 | Track Shoes | 15 |
| D6/D6 XE | 6 | Air Conditioning System | 16 |
| Blades | 6 | Advanced Cabin Filtration | 16 |
| D6/D6 XE LGP (30 in) | 7 | Standards | 16 |
| Blades | 7 | Dozer Technology Features | 17 |
| D6/D6 XE LGP (36 in) | 8 | Standard and Optional Equipment | 18 |
| Blades | 8 | D6/D6 XE Environmental Declaration | 21 |
| D6/D6 XE VPAT | 9 | | |
| Blade | 9 | | |

(continued on next page)

D6/D6 XE Track-Type Tractors Specifications

Table of Contents *(continued)*

D6/D6 XE Track-Type Tractor – Waste Handler Configuration

| | | | |
|--|-----------|--|-----------|
| Key Features and Benefits | 22 | D6/D6 XE LGP (36 in) Waste Handler | 27 |
| Specifications | 23 | Blade | 27 |
| Engine | 23 | D6/D6 XE Waste Handler Features | 28 |
| D6 XE Drive Train | 23 | Waste Handler Features | 29 |
| Fluid/Refill Capacities | 23 | Dimensions – Rear Attachments | 30 |
| Maximum Drawbar Power | 24 | Ripper | 30 |
| D6 Travel Speed | 24 | Winches | 31 |
| D6 XE Travel Speed | 24 | Track Shoes | 32 |
| Hydraulic Controls: | | Blade Cutting Edges | 32 |
| Maximum Operating Flows | 25 | Air Conditioning System | 33 |
| Maximum Operating Pressures | 25 | Advanced Cabin Filtration | 33 |
| Steering | 25 | Standards | 33 |
| D6/D6 XE LGP (30 in) Waste Handler | 26 | Dozer Technology Features | 34 |
| Blade | 26 | Standard and Optional Equipment | 35 |

D6/D6 XE Track-Type Tractor – Heavy Duty/Forestry Configuration

| | | | |
|--|-----------|--|-----------|
| Key Features and Benefits | 38 | D6/D6 XE LGP VPAT (30 in) | 43 |
| Specifications | 39 | Blade | 43 |
| Engine | 39 | D6/D6 XE Heavy Duty/Forestry Features | 44 |
| D6 XE Drive Train | 39 | Dimensions – Rear Attachments | 45 |
| Fluid/Refill Capacities | 39 | Ripper | 45 |
| Maximum Drawbar Power | 40 | Blade Cutting Edges | 45 |
| D6 Travel Speed | 40 | Winches | 46 |
| D6 XE Travel Speed | 40 | Track Shoes | 47 |
| Hydraulic Controls: | | Air Conditioning System | 48 |
| Maximum Operating Flows | 41 | Advanced Cabin Filtration | 48 |
| Maximum Operating Pressures | 41 | Standards | 48 |
| Steering | 41 | Dozer Technology Features | 49 |
| D6/D6 XE | 42 | Standard and Optional Equipment | 50 |
| Blades | 42 | | |

D6/D6 XE Track-Type Tractors Specifications

Engine

| | | |
|--|---|---------------------|
| Engine Model | Cat® C9.3B | |
| Emissions | U.S. EPA Tier 4 Final, EU Stage V, Korea Tier 5 | |
| Net Power – D6 2,200 rpm/D6 XE 1,700 rpm | | |
| ISO 9249/SAE J1349 | 161 kW | 215 hp |
| ISO 9249 (DIN) | 219 mhp | |
| D6 Engine Power – 1,200 rpm | | |
| ISO 14396 | 187 kW | 251 hp |
| ISO 14396 (DIN) | 254 mhp | |
| D6 XE Engine Power – 1,400 rpm | | |
| ISO 14396 | 177 kW | 237 hp |
| ISO 14396 (DIN) | 241 mhp | |
| Bore | 115 mm | 4.5 in |
| Stroke | 149 mm | 5.9 in |
| Displacement | 9.3 L | 567 in ³ |

- The Cat C9.3B engine features a high pressure common rail fuel system, simplified engine system electronics, and simplified air system through the removal of the previously used exhaust gas recirculation (EGR) system.
- The XE drive train allows the engine to operate in a tighter rpm range, 1,400-1,700 rpm, which helps extend engine life and provide improved fuel economy. The increased drive train efficiency also allows the machine to provide more engine power to the ground, resulting in greater machine performance.
- Net power advertised is the power available at the engine flywheel when the engine is equipped with a fan, air cleaner, clean emissions module and alternator.
- Advertised power is tested per the specified standard in effect at the time of manufacture.
- No derating required up to 2286 m (7,500 ft). Above this, automatic derating occurs.
- Cat diesel engines are required to use ULSD (ultra-low sulfur diesel fuel with 15 ppm of sulfur or less) or ULSD blended with the following lower-carbon intensity fuels up to:
 - ✓ 20% biodiesel FAME (fatty acid methyl ester)*
 - ✓ 100% renewable diesel, HVO (hydrogenated vegetable oil) and GTL (gas-to-liquid) fuels

Refer to guidelines for successful application. Please consult your Cat dealer or “Caterpillar Machine Fluids Recommendations” (SEBU6250) for details.

**Engines with no aftertreatment devices can use higher blends, up to 100% biodiesel.*

D6 XE Drive Train

| | |
|-----------------------|----------------|
| Type | Electric Drive |
| Electric Drive System | 715 Volts |
| Nominal Voltage | |

Fluid/Refill Capacities

| | | |
|---------------------------------|---------|---------------|
| Fuel Tank | 341 L | 90 gal |
| Diesel Exhaust Fluid (DEF) Tank | 28 L | 7.4 gal |
| Cooling System – D6 | 63 L | 16.6 gal |
| Cooling System – D6 XE | 77 L | 20.3 gal |
| Engine Crankcase | 24.5 L | 6.5 gal |
| Power Train Oil – D6 | 148 L | 39.1 gal |
| Power Train Oil – D6 XE | 210 L | 55.5 gal |
| Final Drives (each) | 18.2 L | 4.8 gal |
| Roller Frames (each) | 65-85 L | 17.2-22.5 gal |
| Pivot Shaft Compartment | 2.8 L | 0.74 gal |
| Hydraulic Tank Oil | 60 L | 15.8 gal |
| Hydraulic System | 77 L | 20.3 gal |

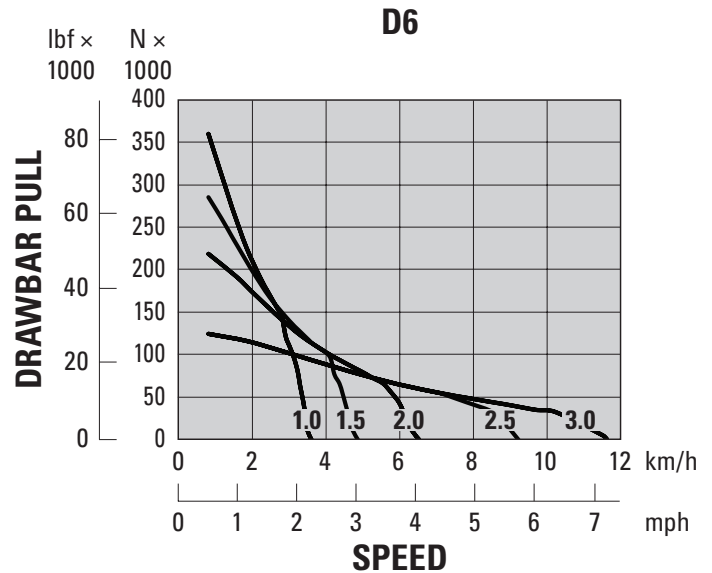
D6/D6 XE Track-Type Tractors Specifications

Maximum Drawbar Power

| | | |
|-------|--------|--------|
| D6 | 114 kW | 153 hp |
| D6 XE | 119 kW | 160 hp |

D6 Travel Speed

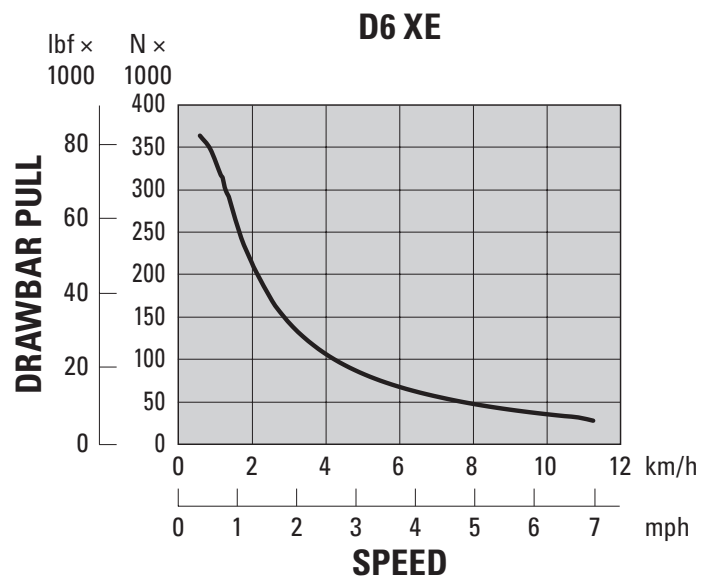
| | | |
|-------------|-----------|---------|
| 1.0 Forward | 3.6 km/h | 2.2 mph |
| 1.5 Forward | 4.9 km/h | 3.0 mph |
| 2.0 Forward | 6.5 km/h | 4.0 mph |
| 2.5 Forward | 9.2 km/h | 5.7 mph |
| 3.0 Forward | 11.7 km/h | 7.2 mph |
| 1.0 Reverse | 3.6 km/h | 2.2 mph |
| 1.5 Reverse | 4.9 km/h | 3.0 mph |
| 2.0 Reverse | 6.5 km/h | 4.0 mph |
| 2.5 Reverse | 8.7 km/h | 5.4 mph |
| 3.0 Reverse | 11.7 km/h | 7.2 mph |



NOTE: Usable pull will depend on traction and weight of machine.

D6 XE Travel Speed

| | | |
|-------------|-----------|---------|
| 1.0 Forward | 3.6 km/h | 2.2 mph |
| 1.5 Forward | 4.9 km/h | 3.0 mph |
| 2.0 Forward | 6.5 km/h | 4.0 mph |
| 2.5 Forward | 9.2 km/h | 5.7 mph |
| 3.0 Forward | 11.7 km/h | 7.2 mph |
| 1.0 Reverse | 3.6 km/h | 2.2 mph |
| 1.5 Reverse | 4.9 km/h | 3.0 mph |
| 2.0 Reverse | 6.5 km/h | 4.0 mph |
| 2.5 Reverse | 9.2 km/h | 5.7 mph |
| 3.0 Reverse | 11.7 km/h | 7.2 mph |



NOTE: Usable pull will depend on traction and weight of machine.

- The fully automatic D6 4-speed transmission, with lock-up clutch torque divider, continuously optimizes gear and engine speed for the application.
- The D6 XE Electric Drive power train has no gears to shift. The dozer automatically optimizes power and efficiency for the application and provides constant power to the ground.
- Thirty ground speed selections are available for both power trains, from 0.0 to 3.0 in 0.1 increments.

D6/D6 XE Track-Type Tractors Specifications

Hydraulic Controls – Maximum Operating Flows

| | D6 (1,900 rpm engine speed*) | | D6 XE (1,700 rpm engine speed*) | |
|--|---------------------------------|------------|------------------------------------|------------|
| Implement Pump Maximum Flow | 212 L/min | 56 gal/min | 212 L/min | 56 gal/min |
| Steering Pump Maximum Flow | 198 L/min | 52 gal/min | 240 L/min | 63 gal/min |
| Fan Pump Flow at Maximum Fan (1,550 rpm) | 42 L/min | 11 gal/min | — | — |
| Fan Pump Flow at Maximum Fan (1,625 rpm) | — | — | 44 L/min | 12 gal/min |

*Engine speed varies with load and travel speed. A high idle/low working load speed shown.

Hydraulic Controls – Maximum Operating Pressures

| | | |
|-----------------------------------|-------------------|-----------------|
| Implement Relief* | 27 600 ± 500 kPa | 4,000 ± 73 psi |
| Steering – D6 (89 cc pump)** | | |
| Electronic Relief | 42 500 ± 1000 kPa | 6,168 ± 145 psi |
| System Maximum Relief | 47 800 ± 1000 kPa | 6,938 ± 145 psi |
| Steering – D6 XE (100 cc pump)*** | | |
| Electronic Relief | 44 500 ± 1000 kPa | 6,459 ± 145 psi |
| System Maximum Relief | 47 800 ± 1000 kPa | 6,938 ± 145 psi |

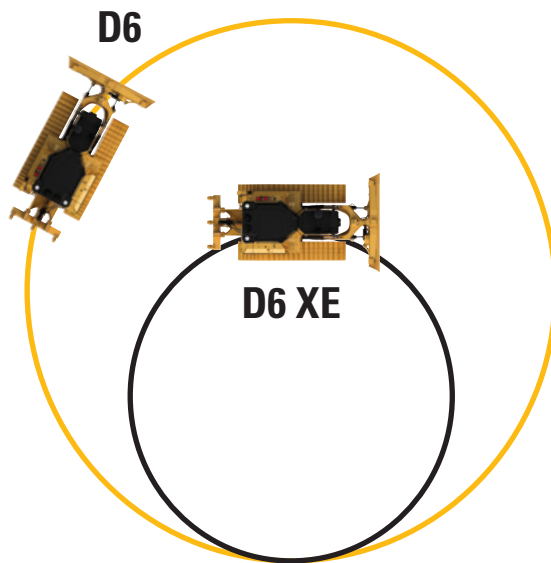
*Implement relief pressure increased over prior model D6 tractors. Consult with your dealer prior to using older vintage or third party implements.

**The same differential steering system is used for both power trains. This system maintains full power to both tracks to provide best-in-class turning with a loaded blade.

***The D6 XE power train utilizes a larger steering pump and enhanced steering controls to provide more steering power, compared to the D6 power train, to turn larger loads and to improve maneuverability. This includes the ability to counter-rotate in gear.

Steering

The D6 XE power train provides up to a 45 percent steering radius reduction compared to the D6. The D6 XE offers in-gear counter rotation for increased maneuverability.



D6/D6 XE Track-Type Tractors Specifications

D6/D6 XE*

| | | |
|--|----------------------------------|----------------------|
| Operating Weight** | 22 130 kg | 48,788 lb |
| Shipping Weight*** | 19 178 kg | 42,280 lb |
| Ground Pressure (ISO 16754) | 54 kPa | 7.9 psi |
| Undercarriage (Standard) | 42 Section with 8 Bottom Rollers | |
| 1 Track Gauge | 1.930 m | 76 in |
| 2 Width of Maximum Track Shoe | 0.610 m | 24 in |
| 3 Width over Tracks | 2.540 m | 100 in |
| Width over Trunnions | 2.692 m | 106 in |
| 4 Length of Track on Ground | 2.964 m | 116.7 in |
| Ground Contact Area (ISO 16754) | 3.992 m ² | 6188 in ² |
| Track Pitch | 0.2028 m | 7.9 in |
| Grouser Height (Moderate Service) | 0.065 m | 2.6 in |
| Ground Clearance | 0.361 m | 14.2 in |
| Oscillation at Front Idler | 0.103 m | 4.0 in |
| 5 Machine Height**** | 3.188 m | 125.5 in |
| 6 Length of Machine without Blade | 4.730 m | 186.2 in |

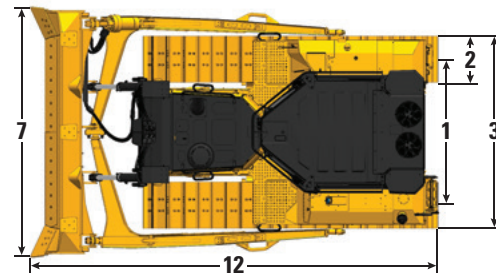
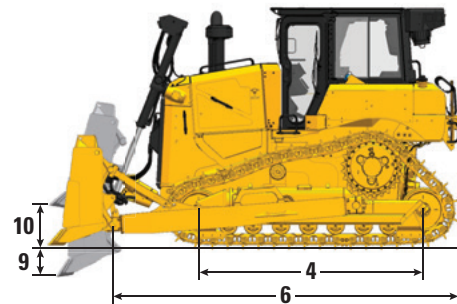
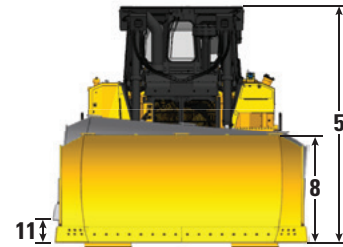
All dimensions above with HDXL undercarriage with Moderate Service shoes of maximum width for configuration, 6 SU blade, and calculated per ISO 16754 unless otherwise specified.

*XE power train adds 0.7 kPa (0.1 psi) and 273 kg (600 lb) to the published ground pressure and weights.

**Operating weight includes blade, lubricants, coolant, full fuel tank, ROPS/FOPS cab, drawbar, and 75 kg (165 lb) operator.

***Shipping weight includes blade lift cylinders, lubricants, coolant, 10% fuel, ROPS/FOPS cab, and drawbar.

****Machine height from tip of grouser to top of Product Link™ Antenna. For Sweeps, add 60 mm (2.36 in) to overall machine height. For forestry sweeps, add 83 mm (3.26 in). With Extreme Service Track Shoes add 12 mm (0.5 in). When Cat Grade with 3D antennas are installed there is no addition to machine height.



Blades

| Configuration | 6 SU | | 6A | |
|--|---------------------|--------------------|---------------------|--------------------|
| | Capacity (ISO 9246) | 5.7 m ³ | 7.5 yd ³ | 4.2 m ³ |
| 7 Width across End Bits | 3.312 m | 10.87 ft | 4.389 m | 14.40 ft |
| Width without End Bits | 3.246 m | 10.65 ft | 4.250 m | 13.94 ft |
| Width across End Bits (Blade Angled) | N/A | | 3.982 m | 13.06 ft |
| Width without End Bits (Blade Angled) | N/A | | 3.858 m | 12.66 ft |
| Maximum Blade Angle | N/A | | 25 degrees | |
| 8 Height | 1.408 m | 4.62 ft | 1.150 m | 3.77 ft |
| 9 Dig Depth | 0.502 m | 19.8 in | 0.595 m | 23.4 in |
| 10 Lift Height | 1.180 m | 46.5 in | 1.084 m | 42.7 in |
| 11 Maximum Tilt at Blade Corner | 0.564 m | 22.2 in | 0.599 m | 23.6 in |
| Maximum Tilt Angle | 9.8 degrees | | 7.8 degrees | |
| Pitch Adjustment | ±4.2 degrees | | N/A | |
| 12 Length of Machine (Blade Straight) | 5.436 m | 17.83 ft | 5.377 m | 17.64 ft |
| Length of Machine (Blade Angled) | N/A | | 6.418 m | 21.06 ft |
| Weight (Blade) | 1385 kg | 3,053 lb | 1265 kg | 2,789 lb |
| Weight (Blade and Push Arms) | 2620 kg | 5,777 lb | 3406 kg | 7,509 lb |

D6/D6 XE Track-Type Tractors Specifications

D6/D6 XE* LGP (30 in)

| | | |
|--|----------------------------------|-----------------------|
| Operating Weight** | 22 870 kg | 50,420 lb |
| Shipping Weight*** | 19 725 kg | 43,486 lb |
| Ground Pressure (ISO 16754) | 45 kPa | 6.5 psi |
| Undercarriage (Standard) | 42 Section with 8 Bottom Rollers | |
| 1 Track Gauge | 2.080 m | 82 in |
| 2 Width of Maximum Track Shoe | 0.760 m | 30 in |
| 3 Width over Tracks | 2.840 m | 111.8 in |
| Width over Trunnions | 2.994 m | 117.9 in |
| 4 Length of Track on Ground | 2.964 m | 116.7 in |
| Ground Contact Area (ISO 16754) | 4.990 m ² | 7,735 in ² |
| Track Pitch | 0.2028 m | 7.9 in |
| Grouser Height (Moderate Service) | 0.065 m | 2.6 in |
| Ground Clearance | 0.361 m | 14.2 in |
| Oscillation at Front Idler | 0.100 m | 3.9 in |
| 5 Machine Height**** | 3.188 m | 125.5 in |
| 6 Length of Machine without Blade | 4.730 m | 186.2 in |

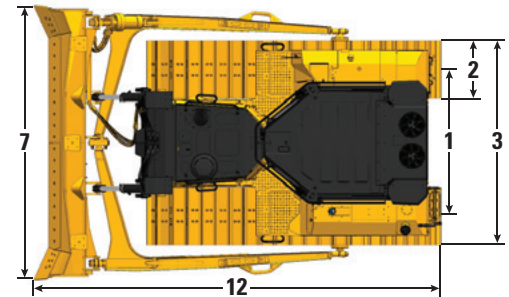
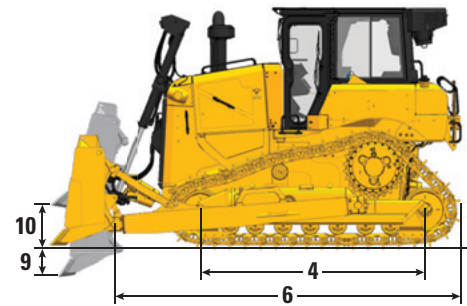
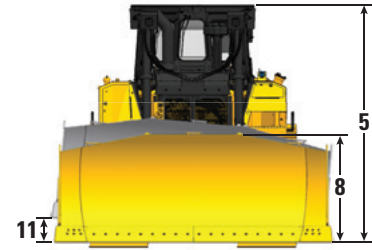
All dimensions above with HDXL undercarriage with Moderate Service shoes of maximum width for configuration, 6 SU blade, and calculated per ISO 16754 unless otherwise specified.

*XE power train adds 0.7 kPa (0.1 psi) and 273 kg (600 lb) to the published ground pressure and weights.

**Operating weight includes blade, lubricants, coolant, full fuel tank, ROPS/FOPS cab, drawbar, and 75 kg (165 lb) operator.

***Shipping weight includes blade lift cylinders, lubricants, coolant, 10% fuel, ROPS/FOPS cab, and drawbar.

****Machine height from tip of grouser to top of Product Link Antenna. For Sweeps, add 60 mm (2.36 in) to overall machine height. For forestry sweeps, add 83 mm (3.26 in). With Extreme Service Track Shoes add 12 mm (0.5 in). When Cat Grade with 3D antennas are installed there is no addition to machine height.



Blades

| Configuration | 6 SU LGP (30 in) | | 6A LGP (30 in) | |
|--|--------------------|---------------------|--------------------|---------------------|
| | | | | |
| Capacity (ISO 9246) | 5.8 m ³ | 7.6 yd ³ | 4.6 m ³ | 6.0 yd ³ |
| 7 Width across End Bits | 3.613 m | 11.85 ft | 4.735 m | 15.54 ft |
| Width without End Bits | 3.551 m | 11.65 ft | 4.596 m | 15.08 ft |
| Width across End Bits (Blade Angled) | N/A | | 4.295 m | 14.09 ft |
| Width without End Bits (Blade Angled) | N/A | | 4.172 m | 13.69 ft |
| Maximum Blade Angle | N/A | | 25 degrees | |
| 8 Height | 1.408 m | 4.62 ft | 1.150 m | 3.77 ft |
| 9 Dig Depth | 0.502 m | 19.8 in | 0.568 m | 22.3 in |
| 10 Lift Height | 1.180 m | 46.5 in | 1.125 m | 44.3 in |
| 11 Maximum Tilt at Blade Corner | 0.551 m | 21.7 in | 0.640 m | 25.2 in |
| Maximum Tilt Angle | 8.8 degrees | | 7.8 degrees | |
| Pitch Adjustment | ±4.2 degrees | | N/A | |
| 12 Length of Machine (Blade Straight) | 5.436 m | 17.84 ft | 5.448 m | 17.87 ft |
| Length of Machine (Blade Angled) | N/A | | 6.561 m | 21.53 ft |
| Weight (Blade) | 1458 kg | 3,215 lb | 1362 kg | 3,003 lb |
| Weight (Blade and Push Arms) | 2835 kg | 6,251 lb | 3426 kg | 7,554 lb |

D6/D6 XE Track-Type Tractors Specifications

D6/D6 XE* LGP (36 in)

| | | |
|--|-----------------------------------|------------------------|
| Operating Weight** | 23 911 kg | 52,715 lb |
| Shipping Weight*** | 21 165 kg | 46,660 lb |
| Ground Pressure (ISO 16754) | 36 kPa | 5.2 psi |
| Undercarriage (Standard) | 45 Section with 8 Bottom Rollers | |
| Undercarriage (Optional) | 45 Section with 10 Bottom Rollers | |
| 1 Track Gauge | 2.286 m | 90 in |
| 2 Width of Maximum Track Shoe | 0.915 m | 36 in |
| 3 Width over Tracks | 3.200 m | 126.0 in |
| Width over Trunnions | 3.491 m | 137.4 in |
| 4 Length of Track on Ground | 3.247 m | 127.8 in |
| Ground Contact Area (ISO 16754) | 6.505 m ² | 10,083 in ² |
| Track Pitch | 0.2028 m | 7.9 in |
| Grouser Height (Moderate Service) | 0.065 m | 2.6 in |
| Ground Clearance | 0.395 m | 15.6 in |
| Oscillation at Front Idler | 0.116 m | 4.6 in |
| 5 Machine Height**** | 3.238 m | 127.5 in |
| 6 Length of Machine without Blade | 5.040 m | 198.4 in |

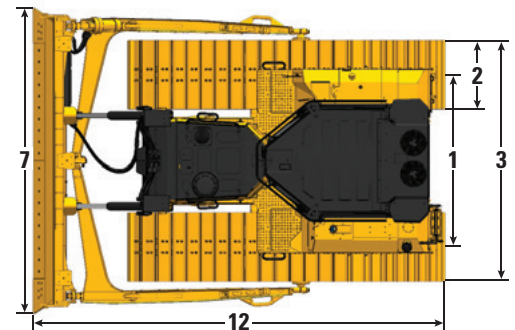
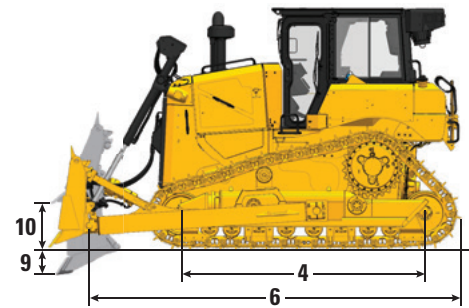
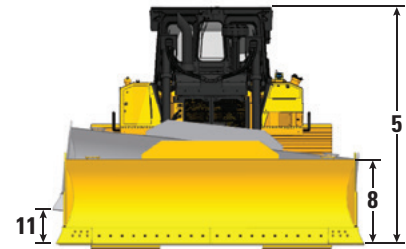
All dimensions above with HDXL undercarriage with Moderate Service shoes of maximum width for configuration, 6 S blade, and calculated per ISO 16754 unless otherwise specified.

*XE power train adds 0.7 kPa (0.1 psi) and 273 kg (600 lb) to the published ground pressure and weights.

**Operating weight includes blade, lubricants, coolant, full fuel tank, ROPS/FOPS cab, drawbar, and 75 kg (165 lb) operator.

***Shipping weight includes blade lift cylinders, lubricants, coolant, 10% fuel, ROPS/FOPS cab, and drawbar.

****Machine height from tip of grouser to top of Product Link Antenna. For Sweeps, add 60 mm (2.36 in) to overall machine height. For forestry sweeps, add 83 mm (3.26 in). With Extreme Service Track Shoes add 12 mm (0.5 in). When Cat Grade with 3D antennas are installed there is no addition to machine height.



Blades

| Configuration | 6 S LGP (36 in) | | 6A LGP (36 in) | |
|--|--------------------|---------------------|--------------------|---------------------|
| Capacity (ISO 9246) | 3.8 m ³ | 5.0 yd ³ | 5.0 m ³ | 6.5 yd ³ |
| 7 Width across End Bits | 4.063 m | 13.33 ft | 5.100 m | 16.73 ft |
| Width without End Bits | 3.917 m | 12.85 ft | 4.961 m | 16.28 ft |
| Width across End Bits (Blade Angled) | N/A | | 4.626 m | 15.18 ft |
| Width without End Bits (Blade Angled) | N/A | | 4.502 m | 14.77 ft |
| Maximum Blade Angle | N/A | | 25 degrees | |
| 8 Height | 1.108 m | 3.64 ft | 1.150 m | 3.77 ft |
| 9 Dig Depth | 0.600 m | 1.97 ft | 0.719 m | 28.3 in |
| 10 Lift Height | 1.080 m | 3.54 ft | 1.173 m | 46.2 in |
| 11 Maximum Tilt at Blade Corner | 0.500 m | 1.64 ft | 0.689 m | 27.1 in |
| Maximum Tilt Angle | 8.8 degrees | | 7.8 degrees | |
| Pitch Adjustment | ±4.2 degrees | | N/A | |
| 12 Length of Machine (Blade Straight) | 5.483 m | 17.99 ft | 5.960 m | 19.55 ft |
| Length of Machine (Blade Angled) | N/A | | 6.996 m | 22.95 ft |
| Weight (Blade) | 1232 kg | 2,717 lb | 1465 kg | 3,230 lb |
| Weight (Blade and Push Arms) | 2383 kg | 5,255 lb | 3630 kg | 8,004 lb |

D6/D6 XE Track-Type Tractors Specifications

D6/D6 XE* VPAT

| | | |
|--|----------------------------------|-----------------------|
| Operating Weight** | 22 275 kg | 49,108 lb |
| Shipping Weight*** | 20 513 kg | 45,223 lb |
| Ground Pressure (ISO 16754) | 49 kPa | 7.1 psi |
| Undercarriage (Standard) | 45 Section with 8 Bottom Rollers | |
| 1 Track Gauge | 2.080 m | 82 in |
| 2 Width of Maximum Track Shoe | 0.610 m | 24 in |
| 3 Width over Tracks | 2.690 m | 105.9 in |
| 4 Length of Track on Ground | 3.247 m | 127.8 in |
| Ground Contact Area (ISO 16754) | 4.473 m ² | 6,933 in ² |
| Track Pitch | 0.2028 m | 7.9 in |
| Grouser Height (Moderate Service) | 0.065 m | 2.6 in |
| Ground Clearance | 0.422 m | 16.6 in |
| Oscillation at Front Idler | 0.112 m | 4.4 in |
| 5 Machine Height**** | 3.188 m | 125.5 in |
| 6 Length of Machine without Blade | 5.134 m | 202.1 in |

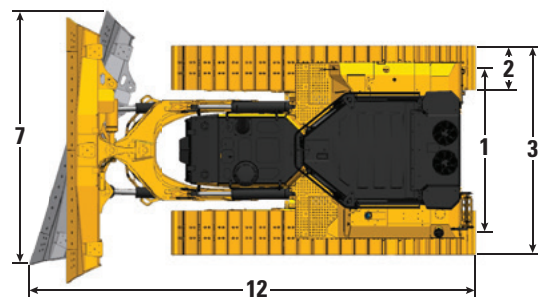
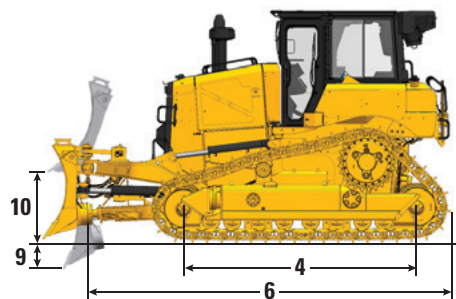
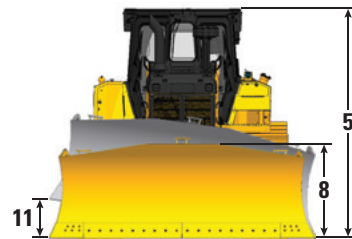
All dimensions above with HDXL undercarriage with Moderate Service shoes of maximum width for configuration, VPAT blade, and calculated per ISO 16754 unless otherwise specified.

*XE power train adds 0.7 kPa (0.1 psi) and 273 kg (600 lb) to the published ground pressure and weights.

**Operating weight includes blade, lubricants, coolant, full fuel tank, ROPS/FOPS cab, drawbar, and 75 kg (165 lb) operator.

***Shipping weight includes blade lift cylinders, C-frame, lubricants, coolant, 10% fuel, ROPS/FOPS cab, and drawbar.

****Machine height from tip of grouser to top of Product Link Antenna. For Sweeps, add 60 mm (2.36 in) to overall machine height. For forestry sweeps, add 83 mm (3.26 in). With Extreme Service Track Shoes add 12 mm (0.5 in). When Cat Grade with 3D antennas are installed there is no addition to machine height.



Blade

| Configuration | 6 VPAT | |
|--|--------------------|---------------------|
| Capacity (ISO 9246) | 4.1 m ³ | 5.4 yd ³ |
| 7 Width across End Bits | 3.680 m | 12.07 ft |
| Width without End Bits | 3.570 m | 11.71 ft |
| Width across End Bits (Blade Angled) | 3.363 m | 11.03 ft |
| Width without End Bits (Blade Angled) | 3.266 m | 10.72 ft |
| Maximum Blade Angle | 24.1 degrees | |
| 8 Height | 1.312 m | 4.30 ft |
| 9 Dig Depth | 0.698 m | 27.5 in |
| 10 Lift Height | 1.131 m | 44.5 in |
| 11 Maximum Tilt at Blade Corner | 0.576 m | 22.7 in |
| Maximum Tilt Angle | 9 degrees | |
| Pitch Adjustment | +3.1/-2.9 degrees | |
| 12 Length of Machine (Blade Straight) | 5.662 m | 18.58 ft |
| Length of Machine (Blade Angled) | 6.365 m | 20.88 ft |
| Weight (Blade) | 1436 kg | 3,166 lb |

D6/D6 XE Track-Type Tractors Specifications

D6/D6 XE* LGP VPAT (30 in)

| | | |
|--|-----------------------------------|-----------------------|
| Operating Weight** | 23 012 kg | 50,733 lb |
| Shipping Weight*** | 21 158 kg | 46,645 lb |
| Ground Pressure (ISO 16754) | 40 kPa | 5.9 psi |
| Undercarriage (Standard) | 46 Section with 8 Bottom Rollers | |
| Undercarriage (Optional) | 46 Section with 10 Bottom Rollers | |
| 1 Track Gauge | 2.286 m | 90 in |
| 2 Width of Maximum Track Shoe | 0.760 m | 30 in |
| 3 Width over Tracks | 3.046 m | 119.9 in |
| 4 Length of Track on Ground | 3.355 m | 132.1 in |
| Ground Contact Area (ISO 16754) | 5.591 m ² | 8,666 in ² |
| Track Pitch | 0.2028 m | 7.9 in |
| Grouser Height (Moderate Service) | 0.065 m | 2.6 in |
| Ground Clearance | 0.395 m | 15.6 in |
| Oscillation at Front Idler | 0.121 m | 4.8 in |
| 5 Machine Height**** | 3.238 m | 127.5 in |
| 6 Length of Machine without Blade | 5.134 m | 202.1 in |

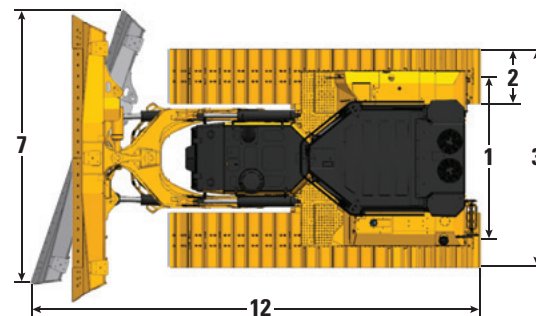
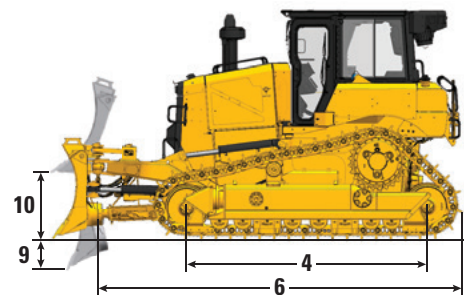
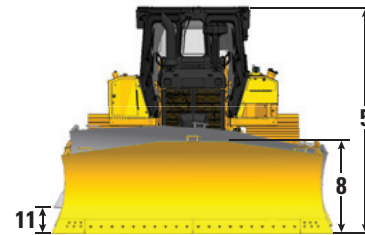
All dimensions above with HDXL undercarriage with Moderate Service shoes of maximum width for configuration, VPAT blade, and calculated per ISO 16754 unless otherwise specified.

*XE power train adds 0.7 kPa (0.1 psi) and 273 kg (600 lb) to the published ground pressure and weights.

**Operating weight includes blade, lubricants, coolant, full fuel tank, ROPS/FOPS cab, drawbar, and 75 kg (165 lb) operator.

***Shipping weight includes blade lift cylinders, C-frame, lubricants, coolant, 10% fuel, ROPS/FOPS cab, and drawbar.

****Machine height from tip of grouser to top of Product Link Antenna. For Sweeps, add 60 mm (2.36 in) to overall machine height. For forestry sweeps, add 83 mm (3.26 in). With Extreme Service Track Shoes add 12 mm (0.5 in). When Cat Grade with 3D antennas are installed there is no addition to machine height.



Blade

| Configuration | 6 VPAT LGP (30 in) | |
|--|--------------------|---------------------|
| Capacity (ISO 9246) | 4.5 m ³ | 5.9 yd ³ |
| 7 Width across End Bits | 4.000 m | 13.12 ft |
| Width without End Bits | 3.890 m | 12.76 ft |
| Width across End Bits (Blade Angled) | 3.655 m | 11.99 ft |
| Width without End Bits (Blade Angled) | 3.554 m | 11.66 ft |
| Maximum Blade Angle | 24.1 degrees | |
| 8 Height | 1.312 m | 4.30 ft |
| 9 Dig Depth | 0.698 m | 27.5 in |
| 10 Lift Height | 1.131 m | 44.5 in |
| 11 Maximum Tilt at Blade Corner | 0.625 m | 24.6 in |
| Maximum Tilt Angle | 9 degrees | |
| Pitch Adjustment | +3.1/-2.9 degrees | |
| 12 Length of Machine (Blade Straight) | 5.662 m | 18.58 ft |
| Length of Machine (Blade Angled) | 6.430 m | 21.10 ft |
| Weight (Blade) | 1520 kg | 3,351 lb |

D6/D6 XE Track-Type Tractors Specifications

D6/D6 XE* LGP VPAT (36 in)

| | | |
|--|-----------------------------------|------------------------|
| Operating Weight** | 23 547 kg | 51,912 lb |
| Shipping Weight*** | 21 593 kg | 47,604 lb |
| Ground Pressure (ISO 16754) | 34 kPa | 5.0 psi |
| Undercarriage (Standard) | 46 Section with 8 Bottom Rollers | |
| Undercarriage (Optional) | 46 Section with 10 Bottom Rollers | |
| 1 Track Gauge | 2.39 m | 94 in |
| 2 Width of Maximum Track Shoe | 0.915 m | 36 in |
| 3 Width over Tracks | 3.305 m | 130.1 in |
| 4 Length of Track on Ground | 3.355 m | 132.1 in |
| Ground Contact Area (ISO 16754) | 6.709 m ² | 10,399 in ² |
| Track Pitch | 0.2028 m | 7.9 in |
| Grouser Height (Moderate Service) | 0.065 m | 2.6 in |
| Ground Clearance | 0.383 m | 15.1 in |
| Oscillation at Front Idler | 0.121 m | 4.8 in |
| 5 Machine Height**** | 3.238 m | 127.5 in |
| 6 Length of Machine without Blade | 5.134 m | 202.1 in |

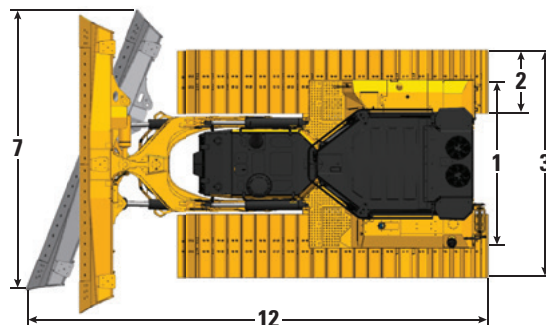
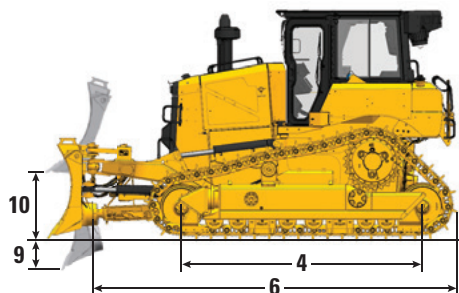
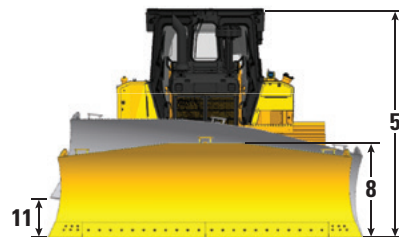
All dimensions above with Heavy Duty undercarriage with Moderate Service shoes of maximum width for configuration, VPAT blade, and calculated per ISO 16754 unless otherwise specified.

*XE power train adds 0.7 kPa (0.1 psi) and 273 kg (600 lb) to the published ground pressure and weights.

**Operating weight includes blade, lubricants, coolant, full fuel tank, ROPS/FOPS cab, tow point, and 75 kg (165 lb) operator.

***Shipping weight includes blade lift cylinders, C-frame, lubricants, coolant, 10% fuel, ROPS/FOPS cab, and tow point.

****Machine height from tip of grouser to top of Product Link Antenna. For Sweeps, add 60 mm (2.36 in) to overall machine height. For forestry sweeps, add 83 mm (3.26 in). With Extreme Service Track Shoes add 12 mm (0.5 in). When Cat Grade with 3D antennas are installed there is no addition to machine height.



Blade

| Configuration | 6 VPAT LGP (36 in) | |
|--|---------------------|---------------------|
| Capacity (ISO 9246) | 4.86 m ³ | 6.5 yd ³ |
| 7 Width across End Bits | 4.340 m | 14.24 ft |
| Width without End Bits | 4.230 m | 13.88 ft |
| Width across End Bits (Blade Angled) | 3.966 m | 13.01 ft |
| Width without End Bits (Blade Angled) | 3.868 m | 12.69 ft |
| Maximum Blade Angle | 24.1 degrees | |
| 8 Height | 1.312 m | 4.30 ft |
| 9 Dig Depth | 0.698 m | 27.5 in |
| 10 Lift Height | 1.131 m | 44.5 in |
| 11 Maximum Tilt at Blade Corner | 0.684 m | 26.9 in |
| Maximum Tilt Angle | 9 degrees | |
| Pitch Adjustment | +3.1/-2.9 degrees | |
| 12 Length of Machine (Blade Straight) | 5.662 m | 18.58 ft |
| Length of Machine (Blade Angled) | 6.500 m | 21.33 ft |
| Weight (Blade) | 1621 kg | 3,574 lb |

D6/D6 XE Track-Type Tractors Specifications

D6/D6 XE* LGP Folding VPAT (30 in) – EU only

| | | |
|---|-----------------------------------|-----------------------|
| Operating Weight** | 23 438 kg | 51,672 lb |
| Shipping Weight*** | 20 853 kg | 45,972 lb |
| Ground Pressure (ISO 16754) | 47 kPa | 6.9 psi |
| Undercarriage (Standard) | 46 Section with 8 Bottom Rollers | |
| Undercarriage (Optional) | 46 Section with 10 Bottom Rollers | |
| 1 Track Gauge | 2.286 m | 90 in |
| 2 Width of Standard Track Shoe**** | 0.660 m | 26 in |
| Optional Track Shoe**** | 0.710 m | 28 in |
| Optional Maximum Track Shoe**** | 0.760 m | 30 in |
| 3 Width over Tracks | 2.946 m | 116.0 in |
| 4 Length of Track on Ground | 3.355 m | 132.1 in |
| Ground Contact Area (ISO 16754) | 4.845 m ² | 7,510 in ² |
| Track Pitch | 0.2028 m | 7.9 in |
| Grouser Height (Moderate Service) | 0.065 m | 2.6 in |
| Ground Clearance | 0.395 m | 15.6 in |
| Oscillation at Front Idler | 0.121 m | 4.8 in |
| 5 Machine Height***** | 3.238 m | 127.5 in |
| 6 Length of Machine without Blade | 5 134 m | 202.1 in |

All dimensions above with HDXL undercarriage with Moderate Service shoes of standard width for configuration, Foldable VPAT blade, and calculated per ISO 16754 unless otherwise specified.

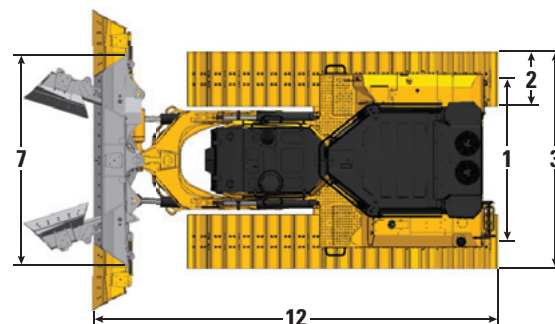
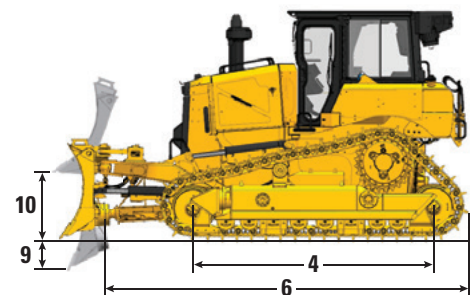
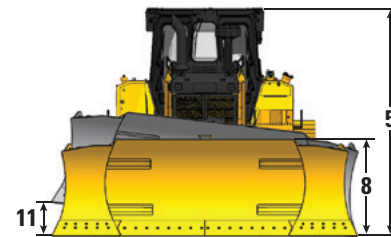
*XE power train adds 0.7 kPa (0.1 psi) and 273 kg (600 lb) to the published ground pressure and weights.

**Operating weight includes blade, lubricants, coolant, full fuel tank, ROPS/FOPS cab, drawbar, and 75 kg (165 lb) operator.

***Shipping weight includes blade lift cylinders, C-frame, lubricants, coolant, 10% fuel, ROPS/FOPS cab, and drawbar.

****Standard track shoe width ensures 3.0 m shipping width with blade folded. Optional 30 inch track shoes provide lower ground pressure of 45 kPa (6.5 psi). Increases shipping width to 3.046 m (120.0 in).

*****Machine height from tip of grouser to top of Product Link Antenna. For Sweeps, add 60 mm (2.36 in) to overall machine height. For forestry sweeps, add 83 mm (3.26 in). With Extreme Service Track Shoes add 12 mm (0.5 in). When Cat Grade with 3D antennas are installed there is no addition to machine height.



Blade

| Configuration | 6 VPAT LGP Folding (30 in) | |
|--|----------------------------|---------------------|
| Capacity (ISO 9246) | 5.2 m ³ | 6.8 yd ³ |
| 7 Width across End Bits | 4.229 m | 13.88 ft |
| Width without End Bits | 4.115 m | 13.50 ft |
| Width of Folded Blade | 2.960 m | 9.71 ft |
| Maximum Blade Angle | 24.1 degrees | |
| 8 Height | 1.312 m | 4.30 ft |
| 9 Dig Depth | 0.698 m | 27.5 in |
| 10 Lift Height | 1.131 m | 44.5 in |
| 11 Maximum Tilt at Blade Corner | 0.659 m | 26.0 in |
| Maximum Tilt Angle | 9 degrees | |
| Pitch Adjustment | +3.1/-2.9 degrees | |
| 12 Length of Machine (Blade Straight) | 5.662 m | 18.58 ft |
| Length of Machine (Blade Angled) | 6.643 m | 21.10 ft |
| Length of Machine (Blade Folded) | 6.637 m | 21.78 ft |
| Weight (Blade) | 2254 kg | 4,969 lb |

D6/D6 XE Track-Type Tractors Specifications

Dimensions – Rear Attachments

Add the following to the total length of the machine when these rear attachments are installed.

| | | Winch | | Ripper | | Drawbar or Counterweight* | | Striker Box | |
|---------------------------|--------------------|--------|---------|---------|---------|---------------------------|--------|-------------|---------|
| Push Arm and Angle Dozers | D6, D6 LGP (30 in) | 441 mm | 17.4 in | 1179 mm | 46.4 in | 249 mm | 9.8 in | 478 mm | 18.8 in |
| | D6 LGP (36 in) | 416 mm | 16.4 in | 1154 mm | 45.4 in | 224 mm | 8.8 in | 453 mm | 17.8 in |
| VPAT Dozers | | 416 mm | 16.4 in | 1154 mm | 45.4 in | 224 mm | 8.8 in | 453 mm | 17.8 in |

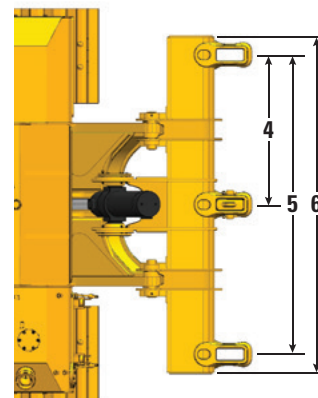
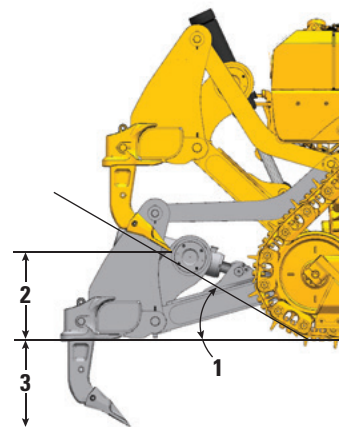
*Drawbar weight 119 kg (262 lb), 331 kg (730 lb) for each counterweight slab. The D6 dozer design provides improved balance. Counterweights are only recommended with heavier aftermarket blades.

Ripper

| | | |
|---|---------------------|-----------------|
| Type | Fixed Parallelogram | |
| Number of Pockets | 3 | |
| 1 Ramp Angle | 31 degrees | |
| 2 Maximum Clearance Raised (under tip) | 664 mm | 26.1 in |
| 3 Maximum Penetration | 571 mm | 22.5 in |
| 4 Pocket Spacing | 1000 mm | 39.4 in |
| 5 Shank Gauge | 2000 mm | 78.8 in |
| Shank Section | 74 mm × 175 mm | 2.9 in × 6.9 in |
| 6 Overall Beam Width | 2190 mm | 86 in |
| Beam Cross Section | 219 mm × 304 mm | 8.8 in × 12 in |
| Maximum Penetration Force* | 68.8 kN | 15,470 lbf |
| Pryout Force | 126 kN | 28,350 lbf |
| Ripper Weight | | |
| With One Shank | 1550 kg | 3,417 lb |
| Each Additional Shank | 73 kg | 161 lb |

Specifications based on D6 tractor configuration with Heavy Duty undercarriage, MS shoes, and straight ripper shanks.

*May vary based on configuration and machine weight.



Blade Cutting Edges

Cat FirstCut™ cutting edges are available for Semi-Universal (SU) blades. FirstCut edges provide superior penetration in tough compacted, rocky or frozen soils resulting in up to 35% larger payload mass and up to 17% improvement in productivity. Consult with your Cat dealer for more benefits and details.

D6/D6 XE Track-Type Tractors Specifications

Winches

The D6 and D6 XE expand industry-leading winch capability with the introduction of available high pressure (27 600 kPa/4,000 psi) hydraulics capable of powering high performance hydraulic winches. These winches provide exceptional controllability for applications that require precise load placement. The D6 retains compatibility with PTO-driven winches for maximum power and efficiency. Winches of both styles are available from Caterpillar for factory or dealer installation, and integrate with the tractor's electronic and control system.

| Tractor Model | D6 | | | | D6 XE | |
|------------------------------------|------------------|--------------------|-----------------------|--------------------|------------------|--------------------|
| | PA56 (Low Speed) | | PA56 (Standard Speed) | | PA85 | |
| Winch model | PA56 (Low Speed) | | PA56 (Standard Speed) | | PA85 | |
| Winch Drive | PTO Mechanical | | PTO Mechanical | | Hydraulic | |
| Control | Electrical | | Electrical | | Electrical | |
| Operating Weight* | 1582 kg | 3,487 lb | 1582 kg | 3,487 lb | 1530 kg | 3,374 lb |
| Oil Capacity | 43.5 L | 11.5 gal | 43.5 L | 11.5 gal | 19 L | 5 gal |
| Increased Tractor Length | | | | | | |
| Standard/LGP | 516 mm | 20.4 in | 516 mm | 20.4 in | 516 mm | 20.4 in |
| LGP (36 in) | 365 mm | 14.4 in | 365 mm | 14.4 in | 365 mm | 14.4 in |
| Drum Diameter | 254 mm | 10 in | 254 mm | 10 in | 254 mm | 10 in |
| Rope Diameter | | | | | | |
| Recommended | 22 mm | 0.88 in | 22 mm | 0.88 in | 22 mm | 0.88 in |
| Optional | 25 mm | 1.0 in | 25 mm | 1.0 in | 25 mm | 1.0 in |
| Drum Working Capacity | | | | | | |
| 22 mm (0.88 in) | 55 m | 180 ft | 55 m | 180 ft | 55 m | 180 ft |
| 25 mm (1.0 in) | 50 m | 163 ft | 50 m | 163 ft | 50 m | 163 ft |
| Cable Ferrule Size (O.D. × Length) | 54 mm × 67 mm | 2.1 in × 2.6 in | 54 mm × 67 mm | 2.1 in × 2.6 in | 54 mm × 67 mm | 2.1 in × 2.6 in |
| Maximum Bare Drum | | | | | | |
| Line Pull** | 399 kN | 89,800 lb | 399 kN | 89,800 lb | 378 kN | 85,000 lb |
| Line Speed*** | 17 m/min | 57 ft/min | 33 m/min | 107 ft/min | 23 m/min | 77 ft/min |
| Maximum Full Drum**** | | | | | | |
| Line Pull** | 399 kN | 89,800 lb | 399 kN | 89,800 lb | 220 kN | 49,500 lb |
| Line Speed*** | 29 m/min | 94 ft/min | 55 m/min | 179 ft/min | 40 m/min | 132 ft/min |

*Operating Weight includes winch, mounting hardware, oil, and recommended wire rope.

**Maximum line pull is lesser of calculated line pull at maximum tractor PTO output torque/hydraulic power or catalog breaking strength of maximum size new IWRC IPS wire rope.

***Maximum line speed is calculated on-load line speed at maximum tractor engine PTO speed or maximum hydraulic power.

****Full drum as defined by SAE J1158.

D6/D6 XE Track-Type Tractors Specifications

Track Shoes

Some track shoes not available in all regions. Please consult your Cat dealer for details.

| | Moderate Service | Extreme Service | Extreme Service Trapezoidal | Self Cleaning | Quad/Quad Ready |
|---|------------------|-----------------|-----------------------------|---------------|-----------------|
| Heavy Duty Extended Life (HDXL) | | | | | |
| D6/D6 XE – 42 Link | | | | | |
| 560 mm (22 in) | ✓ | ✓ | ✓ | | |
| 610 mm (24 in) | ✓ | ✓ | ✓ | | |
| 610 mm (24 in) | | | Heavy Duty | | |
| D6 LGP/D6 XE LGP – 42 Link | | | | | |
| 610 mm (24 in) | ✓ | ✓ | | | |
| 760 mm (30 in) | ✓ | ✓ | ✓ | | |
| D6 LGP/D6 XE LGP (36 in) – 45 Link | | | | | |
| 610 mm (24 in) | ✓ | ✓ | ✓ | | |
| 760 mm (30 in) | ✓ | ✓ | ✓ | | |
| 915 mm (36 in) | ✓ | ✓ | ✓ | | ✓ |
| 1000 mm (39 in) | | | | HD/HDXL | |
| D6 VPAT/D6 XE VPAT – 45 Link | | | | | |
| 610 mm (24 in) | ✓ | ✓ | | | |
| D6 LGP VPAT/D6 XE LGP VPAT– 46 Link | | | | | |
| 610 mm (24 in) | ✓ | ✓ | ✓ | | |
| 660 mm (26 in) | ✓ | | | | |
| 710 mm (28 in) | ✓ | | | | |
| 760 mm (30 in) | ✓ | ✓ | ✓ | | |
| D6 LGP VPAT/D6 XE LGP VPAT (36 in) – 46 Link | | | | | |
| 760 mm (30 in) | ✓ | ✓ | ✓ | | |
| 915 mm (36 in) | ✓ | ✓ | ✓ | | ✓ |
| Cat Abrasion™ | | | | | |
| D6/D6 XE – 42 Link | | | | | |
| 560 mm (22 in) | ✓ | ✓ | | | |
| 610 mm (24 in) | ✓ | ✓ | | | |
| D6 LGP/D6 XE LGP – 42 Link | | | | | |
| 610 mm (24 in) | ✓ | | | | |
| 760 mm (30 in) | ✓ | ✓ | | | |
| D6 LGP/D6 XE LGP (36 in) – 45 Link | | | | | |
| 760 mm (30 in) | ✓ | ✓ | | | |
| 915 mm (36 in) | ✓ | ✓ | | | |
| D6 VPAT/D6 XE VPAT – 45 Link | | | | | |
| 610 mm (24 in) | ✓ | ✓ | | | |
| D6 LGP VPAT/D6 XE LGP VPAT– 46 Link | | | | | |
| 660 mm (26 in) | ✓ | | | | |
| 710 mm (28 in) | ✓ | | | | |
| 760 mm (30 in) | ✓ | ✓ | | | |
| D6 LGP VPAT/D6 XE LGP VPAT (36 in) – 46 Link | | | | | |
| 760 mm (30 in) | ✓ | ✓ | | | |
| 915 mm (36 in) | ✓ | ✓ | | | |

D6/D6 XE Track-Type Tractors Specifications

Air Conditioning System

The air conditioning system on this machine contains the fluorinated greenhouse gas refrigerant R134a (Global Warming Potential = 1430). The system contains 1.36 kg of refrigerant which has a CO₂ equivalent of 1.946 metric tonnes.

Advanced Cabin Filtration

Operator Cabin

- Distributed HVAC ducting with automatic temperature control and blower speed provides ultimate operator comfort with less user input.
- Reduced maintenance of the condenser core with automatic reversing fans.
- Cat Advanced Cabin Filtration is standard.

Cat Advanced Cabin Filtration

- Operator protection from respirable particulate (0.3-10 micron size).
- Sustainably pressurized cab (US Silica compliant).
- Reduced maintenance with longer life, high efficiency filters.
- Protection for all cabin components: electronics, etc.
- Helps meet U.S. Occupational Safety and Health Administration Silica Rule Table 1 requirements for operator cabs.
- Multi-tiered filter offerings for optional efficiency upgrades. Contact Cat dealer for availability.
 - MERV 16 – Standard Equipment
 - HEPA
 - Activated Carbon + HEPA
 - ABEK1 + HEPA

Standards

Rollover Protective Structure (ROPS)/ Falling Object Protective Structure (FOPS)

- ROPS meets ISO 3471:2008, FOPS meets ISO 3449:2005 Level II.

Brakes

- Brakes meet the International Standard ISO 10265:2008.

Sound Level Information

Hearing protection may be needed when the machine is operated with an open operator station, in a noisy environment, with a cab that is not properly maintained, or when the doors and windows are open for extended periods of time.

| Sound Level | | | Test Method |
|-------------------------------|-------|------------|--------------------------------|
| Operator Sound Pressure Level | D6 | 77 dB(A)* | “ISO 6396:2008” ⁽¹⁾ |
| | D6 XE | 76 dB(A)* | |
| Exterior Sound Power Level | D6 | 113 dB(A) | “ISO 6395:2008” ⁽²⁾ |
| | | 111 dB(A)* | “ISO 6395:1988” ⁽²⁾ |
| | D6 XE | 111 dB(A) | “ISO 6395:2008” ⁽²⁾ |
| | | 111 dB(A)* | “ISO 6395:1988” ⁽²⁾ |

*Including machines required to meet applicable regional regulations of Ukraine, United Kingdom, and Countries that Adopt the “EU Directives”; or machines equipped with the sound-suppression package.

⁽¹⁾The measurement was conducted at 70% of the maximum engine cooling fan speed. The sound level may vary at different engine cooling fan speeds. The measurement was conducted with the cab doors and the cab windows closed. The cab was properly installed and maintained.

⁽²⁾The measurement was conducted at 70% of the maximum engine cooling fan speed. The sound level may vary at different engine cooling fan speeds.

The sound levels listed above include both measurement uncertainty and uncertainty due to production variation.

D6/D6 XE Track-Type Tractors Specifications

Dozer Technology Features

Assist technology features help operators of varied experience levels get the job done faster and more accurately. Grade and Command offerings help further enhance your productivity, efficiency and job site safety.

The cab is Third Party Grade Control Ready, equipped with CAN interface, harness pass throughs and mounting features to make it easier to install the grade control system of your choice.

ARO with Assist Package

| | |
|-------------------------------|--|
| Attachment Ready Option (ARO) | ARO provides wiring and mounting provisions for dealer installation of Grade with 3D, AccuGrade, UTS, or other grade control systems. |
| Cat Grade with Slope Assist™ | Slope Assist automatically maintains pre-established blade position without a GNSS/GPS signal – no additional hardware or software needed. For machines with 3D, operators can easily switch back and forth from full 3D automatics to Slope Assist. |
| Steer Assist | Steer Assist automates track and blade tilt steering. Helps reduce operator fatigue by automatically maintaining straight travel with light loads or heavy loads on flat ground and cross slopes. No GNSS/GPS required. |
| Stable Blade | Stable Blade works seamlessly with operator inputs to help produce a smoother surface when operating manually. |
| Slope Indicate | Slope Indicate is included in the main machine display and shows side slope and uphill/downhill grades to help operators with slope work. |
| Blade Load Monitor | Blade Load Monitor gives you real-time feedback on current load versus the optimal blade load based on your ground conditions. Actively monitors machine load and track slip to help you reach optimal pushing capacity. ¹ |
| Traction Control | Traction Control automatically reduces track slip to save you time, fuel and track wear. ¹ |
| AutoCarry™ | AutoCarry automates blade lift to help you maintain consistent blade load and help reduce track slip. ¹ |

Grade 3D with Assist Package

Includes all features from the ARO with Assist Package listed above, plus:

| | |
|-------------------------------------|---|
| Cat Grade with 3D | Factory integrated Cat Grade with 3D uses GNSS/GPS to control the blade so you can get to design plan faster. Low profile antennas are integrated into the cab roof and GNSS/GPS receivers are mounted inside the cab for better protection. ² |
| Steer Assist 3D | Automatically follow guidance lines from site design plans (or Infield designs) under light load or heavy load. ² |
| Dedicated Touchscreen Grade Display | Full-color Grade operator interface is intuitive and easier to use. The 254 mm (10 in) touchscreen uses an Android OS platform and operates like a smart phone. |

Remote Control/Cat Command

| | |
|--|--|
| Remote Control Ready Cab (Standard) | Cab is Remote Control Ready from the factory with external connector for dealer installation of the Cat Command remote control system. |
| Command for Dozing ² (Optional) | Cat Command remote control technology provides full dozer maneuverability from a safe distance when working in hazardous environments. Command offers the choice of line-of-sight consoles or long-distance operator stations (non-line-of-sight). |

¹Feature not operational indoors or in areas where a GNSS/GPS signal is not available.

²Requires Software Enabled Attachment (SEA) installation when not configured from the factory.

Note: Grade and Assist technologies, except Slope Indicate, Blade Load Monitor and Traction Control, are not compatible with Angle blades or specialty blades from Cat Work Tools. Please consult with your Cat dealer for details.

D6/D6 XE Standard and Optional Equipment

Standard and Optional Equipment

Standard and optional equipment may vary. Consult your Cat dealer for details.

| | Standard | Optional | | Standard | Optional |
|---|----------|----------|--|----------|----------|
| POWER TRAIN | | | CAT TECHNOLOGY (continued) | | |
| Fully-automatic 4-speed Transmission with Lock Up Clutch (LUC) torque divider | D6 | | Remote Flash/Troubleshoot | ✓ | |
| XE Electric Drive Power Train | D6 XE | | Grade Connectivity | | ✓ |
| Differential Steering System | ✓ | | Operator ID | ✓ | |
| Cat C9.3B diesel engine with turbo, with engine mounted aftertreatment to meet U.S. EPA Tier 4 Final, EU Stage V, Korea Tier 5 emission standards | ✓ | | Machine Security – Passcode | ✓ | |
| Cat C9.3B diesel engine with thermal shield and liquid cooled turbo | | ✓ | Machine Security – Bluetooth | | ✓ |
| Engine air precleaner with dust ejection | ✓ | | Remote Control Ready | ✓ | |
| Engine air precleaner with dust ejection and screen for high debris applications | | ✓ | Cat Command for Dozing | | ✓ |
| Double reduction planetary final drives | ✓ | | OPERATOR ENVIRONMENT | | |
| Double reduction planetary final drives, guarded | | ✓ | Fully redesigned Premium cab with Integrated ROPS and FOPS, single pane door glass, sliding windows, with Cat Advanced Cabin Filtration | ✓ | |
| Automatic ether starting aid | ✓ | | High debris cab, fully redesigned with Integrated ROPS and FOPS, impact resistant polycarbonate doors, solid side windows for improved sealing, powered precleaner with Cat Advanced Cabin Filtration for improved performance and filter life | | ✓ |
| Electric fuel priming pump | ✓ | | Fully redesigned Heavy Duty cab with Integrated ROPS and FOPS, impact resistant polycarbonate doors, sliding windows, with Cat Advanced Cabin Filtration | | ✓ |
| Electronic parking brake | ✓ | | Full-color 254 mm (10 inch) liquid crystal touch screen display | ✓ | |
| Engine air filter with electronic service indicator | ✓ | | Integrated rearview camera | ✓ | |
| Fuel water separator with electronic service indicator | ✓ | | Joystick control – ARO | | ✓ |
| Jacket water heater, 110V OR 220V based on sales region | ✓ | | Adjustable operator controls/armrests | ✓ | |
| Diesel Exhaust Fluid (DEF) System – Electronic fill indicator, heated lines/tank | ✓ | | Cloth seat with mechanical adjustable lumbar support | ✓ | |
| CAT TECHNOLOGY | | | Deluxe leather heated/ventilated seat with electronic adjustable lumbar support | | ✓ |
| Slope Indicate | ✓ | | Cab mounted modular HVAC system with automatic reversing fans. Automatic temperature and blower control with distributed ducting. | ✓ | |
| ARO with Assist Package | | ✓ | Cat Advanced Cabin Filtration with powered precleaner with MERV 16, HEPA, and Activated Charcoal options | | ✓ |
| – Attachment Ready Option (ARO) | | | Viscous cab mounts for improved ride | ✓ | |
| – Slope Assist | | | Entertainment radio with Bluetooth® and microphone | ✓ | |
| – Steer Assist | | | USB and AUX ports | ✓ | |
| – Stable Blade | | | Enhanced Cab Storage Solutions | ✓ | |
| – Blade Load Monitor | | | Adjustable foot pegs | ✓ | |
| – Traction Control | | | Quick opening floor plate | | ✓ |
| – AutoCarry | | | Screen ready, side and rear | ✓ | |
| Grade 3D with Assist Package | | ✓ | Operator presence switch | ✓ | |
| – Full-color 10-inch (254 mm) touchscreen grade display | | | | | |
| – Steer Assist 3D | | | | | |
| – Grade receivers and antennas | | | | | |
| – Grade Software Enabled Attachment (SEA) | | | | | |
| – ARO with Assist features | | | | | |
| Third Party Grade Control Ready Cab | ✓ | | | | |
| Compatibility with radios and base stations from Trimble, Topcon, and Leica | ✓ | | | | |
| Capability to install 3D grade systems from Trimble, Topcon, and Leica | ✓ | | | | |
| Product Link™, Cellular | ✓ | | | | |
| Product Link – Dual Cellular/Satellite | | ✓ | | | |

(continued on next page)

D6/D6 XE Standard and Optional Equipment

Standard and Optional Equipment *(continued)*

Standard and optional equipment may vary. Consult your Cat dealer for details.

| | Standard | Optional | | Standard | Optional |
|---|----------|-----------|---|----------|----------|
| UNDERCARRIAGE | | | HYDRAULICS | | |
| Structurally improved track roller frame designed to allow conversion between HD and S1 | ✓ | | Load sensing hydraulics – dozer lift and tilt | ✓ | |
| Undercarriage with 8 bottom rollers | ✓ | | Independent steering hydraulics | ✓ | |
| Undercarriage with 10 bottom rollers for fine grading applications | | ✓ | Ripper ready rear hydraulics | D6 | |
| Waste undercarriage | | HDXL only | Ripper and winch ready rear hydraulics | D6 XE | D6 |
| Partially guided undercarriage | | ✓ | Single axis ripper control | ✓ | |
| Fully guided undercarriage | | ✓ | Dual axis ripper/winch control | | ✓ |
| Heavy Duty (HDXL with DuraLink™) | ✓ | | Hydraulic automatically reversing, zero speed capable cooling fan | ✓ | |
| Cat Abrasion™ track | | ✓ | Electronic Hydraulic lockout switch | ✓ | |
| Moderate service track shoes (see chart on page 15) | ✓ | | ELECTRICAL | | |
| Extreme service track shoes (see chart on page 15) | | ✓ | Lights – 6 LED | ✓ | |
| Carrier roller | ✓ | | Premium lights – 12 LED for 360 degree light coverage | | ✓ |
| Hydraulically adjustable track | ✓ | | Backup alarm | ✓ | |
| Replaceable sprocket rim segments | ✓ | | Integrated beacon warning light (does not impact shipping height) | | ✓ |
| BLADES | | | Communication radio ready kit | | ✓ |
| Semi-Universal, ARO mounts | | ✓ | Converter: 15 Amp, 12V outlet | ✓ | |
| Semi-Universal, LGP with ARO mounts | | ✓ | Diagnostic connector | ✓ | |
| Semi-Universal, Waste | | ✓ | Forward warning horn | ✓ | |
| Semi-Universal, LGP Waste | | ✓ | Fuse panel and main power relay located inside cab | ✓ | |
| Straight blade, LGP with ARO mounts | | ✓ | | | |
| Straight blade, LGP Waste | | ✓ | | | |
| VPAT, ARO mounts | | ✓ | | | |
| VPAT, LGP with ARO mounts | | ✓ | | | |
| Foldable VPAT, LGP with ARO mounts | | EU only | | | |
| Angle blade | | NA only | | | |
| Cat FirstCut cutting edges (SU blades) | | ✓ | | | |

(continued on next page)

D6/D6 XE Standard and Optional Equipment

Standard and Optional Equipment (continued)

Standard and optional equipment may vary. Consult your Cat dealer for details.

| | Standard | Optional | | Standard | Optional |
|---|----------|----------|--|----------|----------------|
| SERVICE AND MAINTENANCE | | | ATTACHMENTS | | |
| 30-minute cab removal | ✓ | | Drawbar | ✓ | |
| Ecology drains | ✓ | | High lift multi-shank ripper with straight or curved shanks | | ✓ |
| Ecology drains with high speed oil power train and engine oil change | | ✓ | Lightweight rear tow point | | ✓ |
| Ground level service center with remote electrical disconnect, access light, secondary shutdown switch and hour meter | ✓ | | Striker bar box | | ✓ |
| Fuel tank, 341 L (90 gal) | ✓ | | Counterweights (not recommended unless using heavier aftermarket blades) | | ✓ |
| Fuel tank, 341 L (90 gal), fast fill ready | D6 XE | D6 | PACCAR PA56 winch, low speed PTO | | D6 |
| Wiggins style fast fill nozzle | | ✓ | PACCAR PA85 winch, variable speed hydraulic | | ✓ |
| Mounting provisions for grease gun, shovel, and fire extinguisher | ✓ | | PACCAR PA56 winch, standard speed PTO | | D6 Dealer only |
| Perforated radiator doors, louvered and hinged | ✓ | | Allied H6H winch, variable speed hydraulic | | Dealer only |
| Rear access ladder | ✓ | | Fairlead Assembly; 3-roller, fits PA55, PA56, and PA85 winches | | ✓ |
| Rear work light | | ✓ | Retrofit kit (4th roller); fits PA55, PA56, and PA85 winches | | ✓ |
| Refilling fuel pump | | EU only | GUARDING AND SCREENS | | |
| Removable engine enclosures, perforated and hinged, with under hood work light | ✓ | | Hinged bottom guards | ✓ | |
| Removable engine enclosures, sound suppressed and hinged, with under hood work light | | EU only | Heavy duty sealed and hinged bottom guards | | Push Arm only |
| Scheduled Oil Sampling (S·O·S SM) ports | ✓ | | Heavy duty sealed quick access hinged bottom guards* | | Push Arm only |
| Maintenance free equalizer bar | ✓ | | Standard duty grab handles | ✓ | |
| Certified ISO 14567 tie off points (3) | ✓ | | Heavy duty grab handles | | ✓ |
| Vandalism protection for fluid compartments and battery box | ✓ | | Open Sweeps guarding | | ✓ |
| Dedicated shipping tie downs, rear | ✓ | | Forestry Sweeps guarding with full canopy | | ✓ |
| Shipping tie downs, front bracket | | EU only | Hinged rear screen | | ✓ |
| BATTERIES, STARTERS, ALTERNATORS AND FLUIDS | | | Hinged side screens | | ✓ |
| 150 Amp alternator | ✓ | | Fuel tank guard (with or without fast fill) | | ✓ |
| 150 Amp ducted alternator | | ✓ | Guards for premium lights, front and side | | ✓ |
| Heavy duty batteries, two maintenance-free 12V (1,400 CCA) (24V system) | ✓ | | Machine seals for high debris | | ✓ |
| Heavy duty, 24V starter | ✓ | | Front and rear striker bars | | Dealer only |
| Extended Life Engine coolant, -37° C (-35° F) | ✓ | | *Please check with your Cat dealer for availability dates. | | |
| Extended Life Arctic engine coolant, -51° C (-60° F) | | ✓ | | | |
| Bio hydraulic oil, -37° C (-35° F) | | EU only | | | |

The following information applies to the machine at the time of final manufacture as configured for sale in the regions covered in this document. The content of this declaration is valid as of the date issued; however, content related to machine features and specifications are subject to change without notice. For additional information, please see the machine's Operation and Maintenance Manual.

For more information on sustainability in action and our progress, please visit <https://www.caterpillar.com/en/company/sustainability>.

Engine

- The Cat C9.3B engine meets U.S. EPA Tier 4 Final, EU Stage V, Korea Tier 5 emission standards.
- Cat diesel engines are required to use ULSD (ultra-low sulfur diesel fuel with 15 ppm of sulfur or less) or ULSD blended with the following lower-carbon intensity fuels up to:
 - ✓ 20% biodiesel FAME (fatty acid methyl ester)*
 - ✓ 100% renewable diesel, HVO (hydrogenated vegetable oil) and GTL (gas-to-liquid) fuels

Refer to guidelines for successful application. Please consult your Cat dealer or "Caterpillar Machine Fluids Recommendations" (SEBU6250) for details.

**Engines with no aftertreatment devices can use higher blends, up to 100% biodiesel.*

Air Conditioning System

- The air conditioning system on this machine contains the fluorinated greenhouse gas refrigerant R134a (Global Warming Potential = 1430). The system contains 1.36 kg (2.99 lb) of refrigerant which has a CO₂ equivalent of 1.946 metric tonnes (2.145 tons).

Paint

- Based on best available knowledge, the maximum allowable concentration, measured in parts per million (PPM), of the following heavy metals in paint are:
 - Barium < 0.01%
 - Cadmium < 0.01%
 - Chromium < 0.01%
 - Lead < 0.01%

Sound Performance

For machines required to meet applicable regional regulations of Ukraine, United Kingdom, and Countries that adopt the "EU Directives."

Operator Sound Pressure Level (ISO 6396:2008) – D6 – 77 dB(A)

Operator Sound Pressure Level (ISO 6396:2008) – D6 XE – 76 dB(A)

Exterior Sound Power Level (ISO 6395:1988) – D6 – 111 dB(A)

Exterior Sound Power Level (ISO 6395:1988) – D6 XE – 111 dB(A)

Oils and Fluids

- Caterpillar factory fills with ethylene glycol coolants. Cat Diesel Engine Antifreeze/Coolant (DEAC) and Cat Extended Life Coolant (ELC) can be recycled. Consult your Cat dealer for more information.
- Cat Bio HYDO™ Advanced is an EU Ecolabel approved biodegradable hydraulic oil.
- Additional fluids are likely to be present, please consult the Operations and Maintenance Manual or the Application and Installation guide for complete fluid recommendations and maintenance intervals.

Features and Technology

- The following features and technology may contribute to fuel savings and/or carbon reduction. Features may vary. Consult your Cat dealer for details.
 - Fully automatic D6 continuously adjusts for maximum efficiency and power to the ground
 - Electric Drive D6 XE provides the highest level of productivity and significantly lower fuel consumption
 - Assist technology features help operators work faster and more accurately to save time, materials and fuel
 - Boost productivity up to 50% with Cat technologies like Cat Grade with Slope Assist and Cat Grade with 3D
 - Remote Flash and Remote Troubleshoot

Recycling

- The materials included in machines are categorized as below with approximate weight percentage. Because of variations of product configurations, the following values in the table may vary.

| Material Type | Weight Percentage |
|--------------------------|-------------------|
| Steel | 77.19% |
| Iron | 9.40% |
| Nonferrous Metal | 2.34% |
| Mixed Metal | 0.15% |
| Mixed-Metal and Nonmetal | 2.42% |
| Plastic | 0.64% |
| Rubber | 0.71% |
| Mixed Nonmetallic | 0.03% |
| Fluid | 0.39% |
| Other | 0.69% |
| Uncategorized | 6.05% |
| Total | 100% |

- A machine with higher recyclability rate will ensure more efficient usage of valuable natural resources and enhance End-of-Life value of the product. According to ISO 16714 (Earthmoving machinery – Recyclability and recoverability – Terminology and calculation method), recyclability rate is defined as percentage by mass (mass fraction in percent) of the new machine potentially able to be recycled, reused, or both.

All parts in the bill of material are first evaluated by component type based on a list of components defined by the ISO 16714 and Japan CEMA (Construction Equipment Manufacturers Association) standards. Remaining parts are further evaluated for recyclability based on material type.

Because of variations of product configurations, the following value in the table may vary.

Recyclability – 98%



D6/D6 XE

Waste Handler

Waste Handling package provides added features to help protect the machine and operator in harsh waste applications. Specialized guarding, striker bars and seals help protect the machine from impact, wrapping and airborne debris.

Next Generation Performance

- Up to 35 percent better fuel efficiency.¹
- Use up to 23 percent less fuel.²
- D6 with fully automatic 4-speed transmission continuously adjusts for optimal efficiency and power to the ground.
- D6 XE with Electric Drive provides constant power to the ground and maximum efficiency.
- Class-leading maneuverability and power give you more agility and faster cycle times.
- Unprecedented ease of operation – automatically optimizes for the application with no need to shift gears.
- Lower greenhouse gas emissions – up to 23 percent less CO₂.

Added Machine Protection

- High debris cab has impact-resistant polycarbonate doors, eliminating the need for door screens. Solid side windows help improve pressurization.
- Powered precleaner is integrated for cleaner cab air and increases the cab filter change interval to 1,000 hours. MERV16, HEPA, and Activated Carbon filters are available.
- Fuel tank guards and hinged heavy duty sealed bottom guards for easy cleaning and to keep debris out.
- High debris seals offer additional protection around fenders, fuel tank, radiator guard and rear hood support. Provides a seal across the top, rear of the case to prevent debris entry.
- Rear striker bar helps protect against trash climbing up the tracks.
- Track roller frame mounted striker bars are available for reduced track widths. Contact your dealer for details.
- Heavy duty guarded final drives provide added protection against wrapping and impact. Pivot shaft seal guards help prevent debris from entering and damaging seals.
- Guarded lights mounted up and away from main debris area for protection, while still giving you plenty of light on the work area.
- Optional Premium light packages offer 360-degree light coverage.
- Three warning lights integrated into the top perimeter of the cab, fully visible for a 360 degree view.
- Optional side and rear cab screens available for extra protection.

Ease of Maintenance

- Single plane cooling system with automatic reversing fan aids cleanout.
- Ducted alternator to get fresher/filtered air to the alternator.
- High debris engine air filtration system extends filter life.
- Laminated thermal shields and insulated Clean Emissions Module provide added thermal protection in high debris applications.
- Quick access floor panels give you tool-less access for easy cleanout.
- Auto-reversing Heating/Ventilation/Air Conditioning (HVAC) system fans to keep core clean.
- If needed, cab can be removed in 30-minutes, aiding tasks like fire suppression equipment installation.
- Dedicated mounting location for fire extinguisher.
- Mounting bracket keeps shovel handy for quick cleanouts.

Equipped for the Job

- Landfill blades are equipped with a trash rack to increase productive capacity when machine works in waste streams.
- Guarded bulldozer arrangement provides sleeves to protect cylinder lines in harsh applications. Includes push arms, trunnions, tilt cylinder line and tilt cylinder.
- Heavy Duty Extended Life (HDXL) undercarriage includes Kevlar® guarded, sealed idlers to help prevent debris such as wire, string or plastic bags from wrapping into seals.
- Press-fit bushings and Positive Pin Retention (PPR2) are particularly well suited for impact applications like waste.
- Center-hole track shoes help eject debris.
- Heavy duty grab handles aid access/egress.

All comparisons to 2014-2016 3-speed D6T (U.S. EPA Tier 4 Final/EU Stage IV). Maintenance comparisons to D6T over initial 10,000 hours of operation.

¹ Material moved per liter/gallon of fuel.

² Liters/gallons per hour.



D6/D6 XE Waste Handler Specifications

Engine

| | | |
|--|---|---------------------|
| Engine Model | Cat C9.3B | |
| Emissions | U.S. EPA Tier 4 Final, EU Stage V, Korea Tier 5 | |
| Net Power – D6 2,200 rpm/D6 XE 1,700 rpm | | |
| ISO 9249/SAE J1349 | 161 kW | 215 hp |
| ISO 9249 (DIN) | 219 mhp | |
| D6 Engine Power – 1,200 rpm | | |
| ISO 14396 | 187 kW | 251 hp |
| ISO 14396 (DIN) | 254 mhp | |
| D6 XE Engine Power – 1,400 rpm | | |
| ISO 14396 | 177 kW | 237 hp |
| ISO 14396 (DIN) | 241 mhp | |
| Bore | 115 mm | 4.5 in |
| Stroke | 149 mm | 5.9 in |
| Displacement | 9.3 L | 567 in ³ |

- The Cat C9.3B engine features a high pressure common rail fuel system, simplified engine system electronics, and simplified air system through the removal of the previously used exhaust gas recirculation (EGR) system.
- The XE drive train allows the engine to operate in a tighter rpm range, 1,400-1,700 rpm, which helps extend engine life and provide improved fuel economy. The increased drive train efficiency also allows the machine to provide more engine power to the ground, resulting in greater machine performance.
- Net power advertised is the power available at the engine flywheel when the engine is equipped with a fan, air cleaner, clean emissions module and alternator.
- Advertised power is tested per the specified standard in effect at the time of manufacture.
- No derating required up to 2286 m (7,500 ft). Above this, automatic derating occurs.

Cat diesel engines are required to use ULSD (ultra-low sulfur diesel fuel with 15 ppm of sulfur or less) or ULSD blended with the following lower-carbon intensity fuels up to:

- ✓ 20% biodiesel FAME (fatty acid methyl ester)*
- ✓ 100% renewable diesel, HVO (hydrogenated vegetable oil) and GTL (gas-to-liquid) fuels

Refer to guidelines for successful application. Please consult your Cat dealer or “Caterpillar Machine Fluids Recommendations” (SEBU6250) for details.

**Engines with no aftertreatment devices can use higher blends, up to 100% biodiesel..*

D6 XE Drive Train

| | |
|-----------------------|----------------|
| Type | Electric Drive |
| Electric Drive System | 715 Volts |
| Nominal Voltage | |

Fluid/Refill Capacities

| | | |
|-------------------------|---------|---------------|
| Fuel Tank | 341 L | 90 gal |
| DEF Tank | 28 L | 7.4 gal |
| Cooling System – D6 | 63 L | 16.6 gal |
| Cooling System – D6 XE | 77 L | 20.3 gal |
| Engine Crankcase | 24.5 L | 6.5 gal |
| Power Train Oil – D6 | 148 L | 39.1 gal |
| Power Train Oil – D6 XE | 210 L | 55.5 gal |
| Final Drives (each) | 18.2 L | 4.8 gal |
| Roller Frames (each) | 65-85 L | 17.2-22.5 gal |
| Pivot Shaft Compartment | 2.8 L | 0.74 gal |
| Hydraulic Tank Oil | 60 L | 15.8 gal |
| Hydraulic System | 77 L | 20.3 gal |

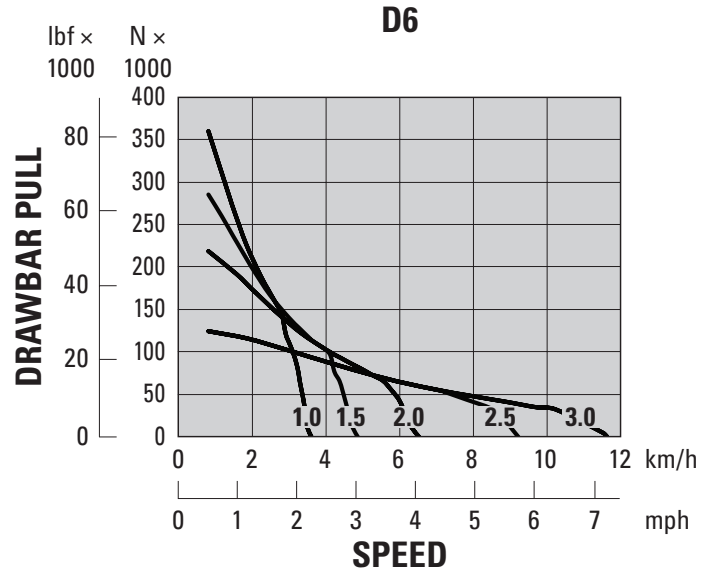
D6/D6 XE Waste Handler Specifications

Maximum Drawbar Power

| | | |
|-------|--------|--------|
| D6 | 114 kW | 153 hp |
| D6 XE | 119 kW | 160 hp |

D6 Travel Speed

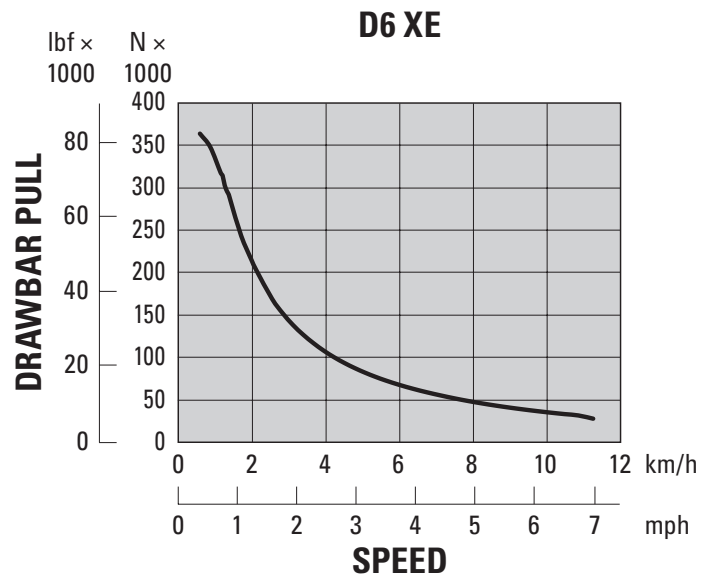
| | | |
|-------------|-----------|---------|
| 1.0 Forward | 3.6 km/h | 2.2 mph |
| 1.5 Forward | 4.9 km/h | 3.0 mph |
| 2.0 Forward | 6.5 km/h | 4.0 mph |
| 2.5 Forward | 9.2 km/h | 5.7 mph |
| 3.0 Forward | 11.7 km/h | 7.2 mph |
| 1.0 Reverse | 3.6 km/h | 2.2 mph |
| 1.5 Reverse | 4.9 km/h | 3.0 mph |
| 2.0 Reverse | 6.5 km/h | 4.0 mph |
| 2.5 Reverse | 8.7 km/h | 5.4 mph |
| 3.0 Reverse | 11.7 km/h | 7.2 mph |



NOTE: Usable pull will depend on traction and weight of machine.

D6 XE Travel Speed

| | | |
|-------------|-----------|---------|
| 1.0 Forward | 3.6 km/h | 2.2 mph |
| 1.5 Forward | 4.9 km/h | 3.0 mph |
| 2.0 Forward | 6.5 km/h | 4.0 mph |
| 2.5 Forward | 9.2 km/h | 5.7 mph |
| 3.0 Forward | 11.7 km/h | 7.2 mph |
| 1.0 Reverse | 3.6 km/h | 2.2 mph |
| 1.5 Reverse | 4.9 km/h | 3.0 mph |
| 2.0 Reverse | 6.5 km/h | 4.0 mph |
| 2.5 Reverse | 9.2 km/h | 5.7 mph |
| 3.0 Reverse | 11.7 km/h | 7.2 mph |



NOTE: Usable pull will depend on traction and weight of machine.

- The fully automatic D6 4-speed transmission, with lock-up clutch torque divider, continuously optimizes gear and engine speed for the application.
- The D6 XE Electric Drive power train has no gears to shift. The dozer automatically optimizes power and efficiency for the application and provides constant power to the ground.
- Thirty ground speed selections are available for both power trains, from 0.0 to 3.0 in 0.1 increments.

D6/D6 XE Waste Handler Specifications

Hydraulic Controls – Maximum Operating Flows

| | D6 (1,900 rpm engine speed*) | | D6 XE (1,700 rpm engine speed*) | |
|--|---------------------------------|------------|------------------------------------|------------|
| Implement Pump Maximum Flow | 212 L/min | 56 gal/min | 212 L/min | 56 gal/min |
| Steering Pump Maximum Flow | 198 L/min | 52 gal/min | 240 L/min | 63 gal/min |
| Fan Pump Flow at Maximum Fan (1,550 rpm) | 42 L/min | 11 gal/min | — | — |
| Fan Pump Flow at Maximum Fan (1,625 rpm) | — | — | 44 L/min | 12 gal/min |

*Engine speed varies with load and travel speed. A high idle/low working load speed shown.

Hydraulic Controls – Maximum Operating Pressures

| | | |
|-----------------------------------|-------------------|-----------------|
| Implement Relief* | 27 600 ± 500 kPa | 4,000 ± 73 psi |
| Steering – D6 (89 cc pump)** | | |
| Electronic Relief | 42 500 ± 1000 kPa | 6,168 ± 145 psi |
| System Maximum Relief | 47 800 ± 1000 kPa | 6,938 ± 145 psi |
| Steering – D6 XE (100 cc pump)*** | | |
| Electronic Relief | 44 500 ± 1000 kPa | 6,459 ± 145 psi |
| System Maximum Relief | 47 800 ± 1000 kPa | 6,938 ± 145 psi |

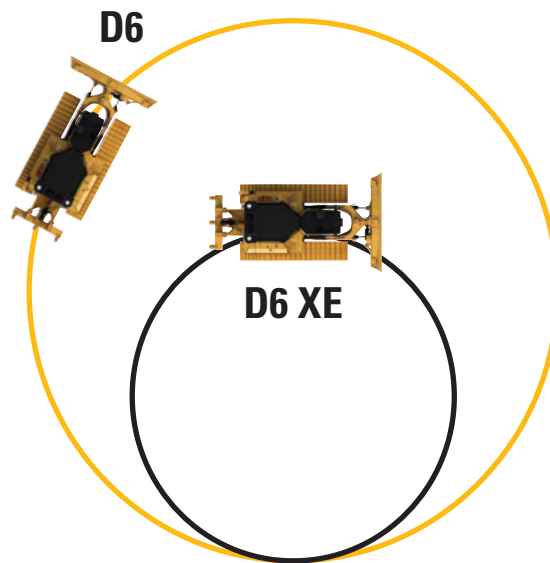
*Implement relief pressure increased over prior model D6 tractors. Consult with your dealer prior to using older vintage or third party implements.

**The same differential steering system is used for both power trains. This system maintains full power to both tracks to provide best-in-class turning with a loaded blade.

***The D6 XE power train utilizes a larger steering pump and enhanced steering controls to provide more steering power, compared to the D6 power train, to turn larger loads and to improve maneuverability. This includes the ability to counter-rotate in gear.

Steering

The D6 XE power train provides up to a 45 percent steering radius reduction compared to the D6. The D6 XE offers in-gear counter rotation for increased maneuverability.



D6/D6 XE Waste Handler Specifications

D6/D6 XE* LGP (30 in) Waste Handler

| | | |
|--|----------------------------------|-----------------------|
| Operating Weight** | 24 061 kg | 53,045 lb |
| Shipping Weight*** | 21 351 kg | 47,071 lb |
| Ground Pressure (ISO 16754) | 50 kPa | 7.3 psi |
| Undercarriage (Standard) | 42 Section with 8 Bottom Rollers | |
| 1 Track Gauge | 2.080 m | 82 in |
| 2 Width of Maximum Track Shoe | 0.760 m | 30 in |
| 3 Width over Tracks | 2.840 m | 111.8 in |
| Width over Trunnions | 2.994 m | 117.9 in |
| 4 Length of Track on Ground | 2.964 m | 116.7 in |
| Ground Contact Area (ISO 16754) | 4.696 m ² | 7,279 in ² |
| Track Pitch | 0.2028 m | 7.9 in |
| Grouser Height (Extreme Service) | 0.069 m | 2.7 in |
| Ground Clearance | 0.363 m | 14.3 in |
| Oscillation at Front Idler | 0.100 m | 3.9 in |
| 5 Machine Height**** | 3.188 m | 125.5 in |
| 6 Length of Machine without Blade | 5.208 m | 205.0 in |

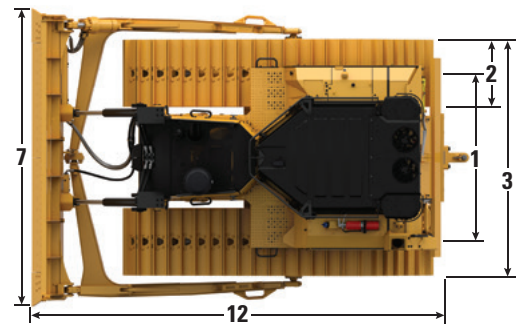
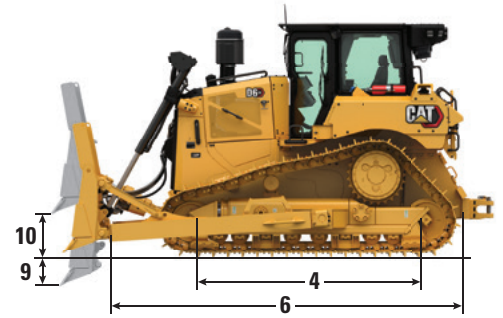
All dimensions above with HDXL waste undercarriage with Extreme Service shoes of maximum width for configuration, waste blade, and calculated per ISO 16754 unless otherwise specified.

*XE power train adds 0.7 kPa (0.1 psi) and 273 kg (600 lb) to the published ground pressure and weights.

**Waste Handler operating weight varies by options selected. Operating weight includes waste blade, fuel tank guards, guarded final drives, chassis bars, striker box, high debris ROPS/FOPS cab, lubricants, coolant, full fuel tank, and 75 kg (165 lb) operator.

***Shipping weight includes blade lift cylinders, fuel tank guards, guarded final drives, chassis bars, striker box, high debris ROPS/FOPS cab, lubricants, coolant, and 10% fuel.

****Machine height from tip of grouser to top of Product Link Antenna. For Sweeps, add 60 mm (2.36 in) to overall machine height. For forestry sweeps, add 83 mm (3.26 in). With Extreme Service Track Shoes add 12 mm (0.5 in). When Cat Grade with 3D antennas are installed there is no addition to machine height.



Blade

| Configuration | 6 SU LGP (30 in) Landfill | |
|--|---------------------------|----------------------|
| Capacity (ISO 9246) | 12.3 m ³ | 16.1 yd ³ |
| 7 Width across End Bits | 3.613 m | 11.85 ft |
| Width without End Bits | 3.551 m | 11.65 ft |
| Width across End Bits (Blade Angled) | N/A | |
| Width without End Bits (Blade Angled) | N/A | |
| Maximum Blade Angle | N/A | |
| 8 Height | 2.027 m | 6.65 ft |
| 9 Dig Depth | 0.502 m | 19.8 in |
| 10 Lift Height | 1.180 m | 46.5 in |
| 11 Maximum Tilt at Blade Corner | 0.551 m | 21.7 in |
| Maximum Tilt Angle | 8.8 degrees | |
| Pitch Adjustment | ±4.2 degrees | |
| 12 Length of Machine (Blade Straight) | 5.436 m | 17.84 ft |
| Length of Machine (Blade Angled) | N/A | |
| Weight (Blade) | 1712 kg | 3,775 lb |
| Weight (Blade and Push Arms) | 2985 kg | 6,581 lb |

D6/D6 XE Waste Handler Specifications

D6/D6 XE* LGP (36 in) Waste Handler

| | | |
|--|----------------------------------|------------------------|
| Operating Weight** | 25 414 kg | 56,028 lb |
| Shipping Weight*** | 21 165 kg | 46,660 lb |
| Ground Pressure (ISO 16754) | 38.6 kPa | 5.6 psi |
| Undercarriage (Standard) | 45 Section with 8 Bottom Rollers | |
| 1 Track Gauge | 2.286 m | 90 in |
| 2 Width of Maximum Track Shoe | 0.915 m | 36 in |
| 3 Width over Tracks | 3.200 m | 126.0 in |
| Width over Trunnions | 3.491 m | 137.4 in |
| 4 Length of Track on Ground | 3.247 m | 127.8 in |
| Ground Contact Area (ISO 16754) | 6.505 m ² | 10,083 in ² |
| Track Pitch | 0.2028 m | 7.9 in |
| Grouser Height (Moderate Service) | 0.065 m | 2.6 in |
| Ground Clearance | 0.411 m | 16.2 in |
| Oscillation at Front Idler | 0.116 m | 4.6 in |
| 5 Machine Height**** | 3.238 m | 127.5 in |
| 6 Length of Machine without Blade | 5.040 m | 198.4 in |

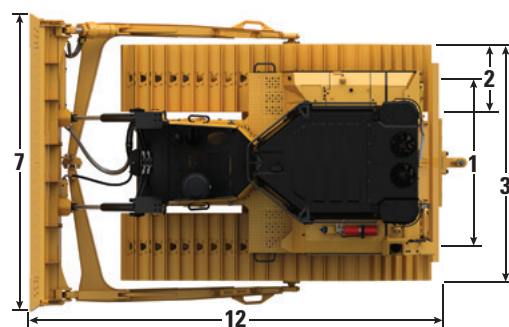
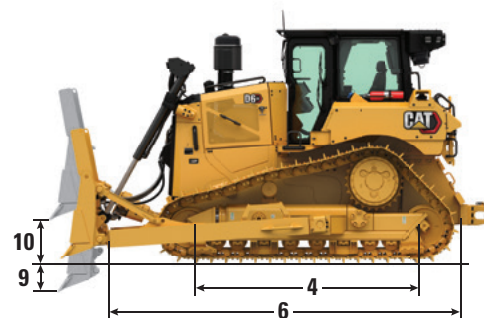
All dimensions above with HDXL waste undercarriage with Extreme Service shoes of maximum width for configuration, waste blade, and calculated per ISO 16754 unless otherwise specified.

*XE power train adds 0.7 kPa (0.1 psi) and 273 kg (600 lb) to the published ground pressure and weights.

**Waste Handler operating weight varies by options selected. Operating weight includes waste blade, fuel tank guards, guarded final drives, chassis bars, striker box, high debris ROPS/FOPS cab, lubricants, coolant, full fuel tank, and 75 kg (165 lb) operator.

***Shipping weight includes blade lift cylinders, fuel tank guards, guarded final drives, chassis bars, striker box, high debris ROPS/FOPS cab, lubricants, coolant, and 10% fuel.

****Machine height from tip of grouser to top of Product Link Antenna. For Sweeps, add 60 mm (2.36 in) to overall machine height. For forestry sweeps, add 83 mm (3.26 in). With Extreme Service Track Shoes add 12 mm (0.5 in). When Cat Grade with 3D antennas are installed there is no addition to machine height.



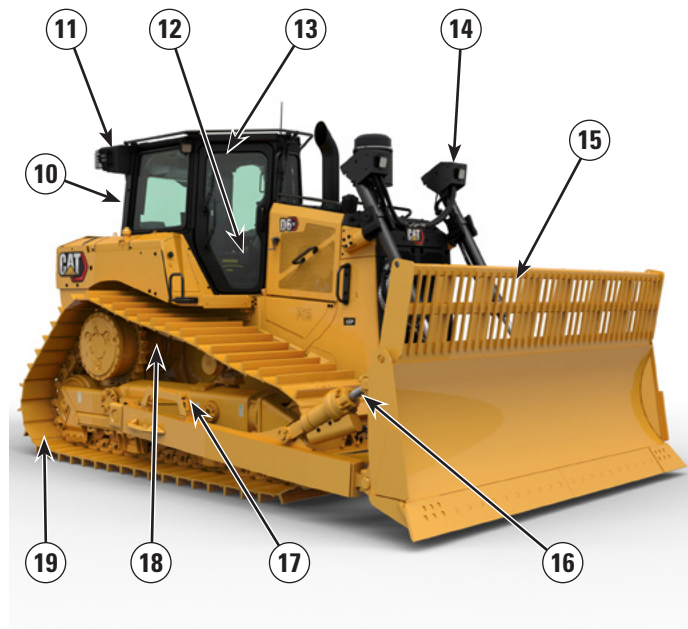
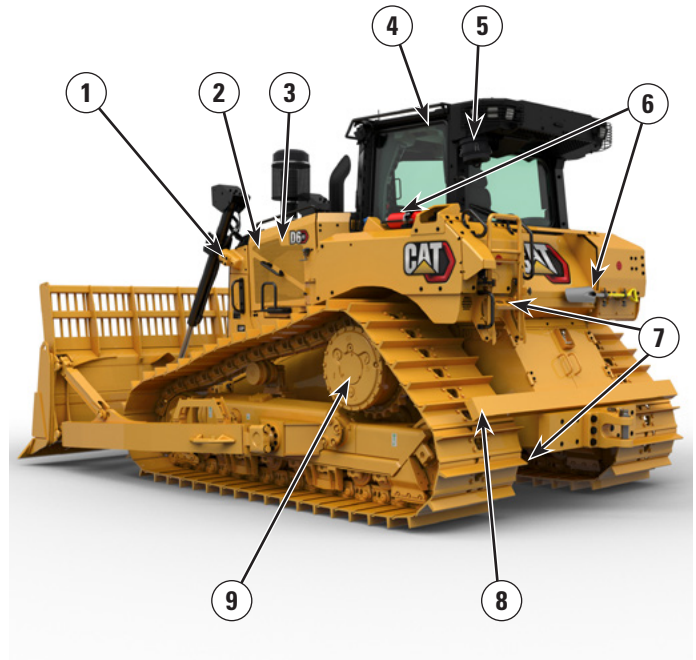
Blade

| Configuration | 6 S LGP (36 in) Landfill | |
|--|--------------------------|-----------------------|
| Capacity (ISO 9246) | 12.26 m ³ | 16.03 yd ³ |
| 7 Width across End Bits | 4.063 m | 13.33 ft |
| Width without End Bits | 3.917 m | 12.85 ft |
| Width across End Bits (Blade Angled) | N/A | |
| Width without End Bits (Blade Angled) | N/A | |
| Maximum Blade Angle | N/A | |
| 8 Height | 2.034 m | 6.67 ft |
| 9 Dig Depth | 0.600 m | 1.97 ft |
| 10 Lift Height | 1.080 m | 3.54 ft |
| 11 Maximum Tilt at Blade Corner | 0.500 m | 1.64 ft |
| Maximum Tilt Angle | 8.8 degrees | |
| Pitch Adjustment | ±4.2 degrees | |
| 12 Length of Machine (Blade Straight) | 5.483 m | 17.99 ft |
| Length of Machine (Blade Angled) | N/A | |
| Weight (Blade) | 1528 kg | 3,369 lb |
| Weight (Blade and Push Arms) | 2678 kg | 5,905 lb |

D6/D6 XE Waste Handler Specifications

D6/D6 XE Waste Handler Features

- 1) Single plane cooling system with automatic reversing fan aids cleanout.
- 2) Ducted alternator to get fresher/filtered air to the alternator. High debris engine air filtration system extends filter life.
- 3) Laminated thermal shields and insulated Clean Emissions Module provide added thermal protection in high debris applications.
- 4) High debris cab has impact-resistant polycarbonate doors, eliminating the need for door screens. Solid side windows help improve pressurization.
- 5) Powered precleaner is integrated for cleaner cab air and increases the cab filter change interval to 1,000 hours. MERV16, HEPA, and Activated Carbon filters are available.
- 6) Dedicated mounting location for fire extinguisher. Mounting bracket keeps shovel handy for quick cleanouts.
- 7) Fuel tank guards and hinged heavy duty sealed bottom guards for easy cleaning and to keep debris out. High debris seals offer additional protection around fenders, fuel tank, radiator guard and rear hood support. Provides a seal across the top, rear of the case to prevent debris entry.



- 8) Rear striker bar helps protect against trash climbing up the tracks.
- 9) Heavy duty guarded final drives provide added protection against wrapping and impact. Pivot shaft seal guards help prevent debris from entering and damaging seals.
- 10) If needed, cab can be removed in 30-minutes, aiding tasks like fire suppression equipment installation.
- 11) Auto-reversing Heating/Ventilation/Air Conditioning (HVAC) system fans to keep core clean
- 12) Quick access floor panels give you tool-less access for easy cleanout.
- 13) Three warning lights integrated into the top perimeter of the cab, fully visible for a 360-degree view
- 14) Guarded lights mounted up and away from main debris area for protection, while still giving you plenty of light on the work area. Optional Premium light packages offer 360-degree light coverage.

- 15) Landfill blades are equipped with a trash rack to increase productive capacity when machine works in waste streams.
- 16) Guarded bulldozer arrangement provides sleeves to protect cylinder lines in harsh applications. Includes push arms, trunnions, tilt cylinder line and tilt cylinder.
- 17) Heavy Duty Extended Life (HDXL) undercarriage includes Kevlar® guarded, sealed idlers to help prevent debris such as wire, string or plastic bags from wrapping into seals.
- 18) Press-fit bushings and Positive Pin Retention (PPR2) are particularly well suited for impact applications like waste.
- 19) Center-hole track shoes help eject debris.

D6/D6 XE Waste Handler Specifications

Waste Handler Features

Waste Handler Selection

Push Arm dozers can be fully equipped with guarding and seals that provide the added durability ideally suited for pushing trash streams in landfills and transfer stations.

VPAT dozers may also be used in trash streams, but the C-frame blade system makes them better suited to jobs like cell building, cover, and access road/maintenance work.

| | D6/D6 XE | D6/D6 XE LGP 30 | D6/D6 XE LGP 36 | D6/D6 XE VPAT | D6/D6 XE LGP VPAT 30 | D6/D6 XE LGP VPAT 36 |
|--|----------|--------------------|--------------------|------------------|-------------------------|-------------------------|
| Cat C9.3B diesel engine with thermal shield and liquid cooled turbo | ✓ | ✓ | ✓ | ✓ | ✓ | ✓ |
| Engine air precleaner with dust ejection and screen for high debris applications | ✓ | ✓ | ✓ | ✓ | ✓ | ✓ |
| Reversing hydraulic demand fan | ✓ | ✓ | ✓ | ✓ | ✓ | ✓ |
| Double reduction planetary final drives, guarded | ✓ | ✓ | ✓ | ✓ | ✓ | ✓ |
| High Debris cab with impact resistant polycarbonate doors, solid side windows, powered precleaner with Cat Advanced Cabin Filtration | ✓ | ✓ | ✓ | ✓ | ✓ | ✓ |
| Rearview camera | ✓ | ✓ | ✓ | ✓ | ✓ | ✓ |
| Quick opening floor plates | ✓ | ✓ | ✓ | ✓ | ✓ | ✓ |
| Hinged side and rear cab screens | • | • | • | • | • | • |
| Waste undercarriage – HDXL only | ✓ | ✓ | ✓ | ✓ | ✓ | ✓ |
| Extreme service track shoes with trapezoidal holes | ★ | ★ | ★ | ★ | ★ | ★ |
| Landfill blade with guarded hoses | ✓ | ✓ | ✓ | | | |
| 150 Amp ducted alternator | ✓ | ✓ | ✓ | ✓ | ✓ | ✓ |
| Striker bar box | ★ | ★ | ★ | ★ | ★ | ★ |
| Heavy duty sealed bottom guards | ✓ | ✓ | ✓ | ✓ | ✓ | ✓ |
| Heavy duty sealed quick access bottom guards | ★ | ★ | ★ | | | |
| Fuel tank guard | ✓ | ✓ | ✓ | ✓ | ✓ | ✓ |
| Premium lights with guards (12 LED) | ★ | ★ | ★ | ★ | ★ | ★ |
| Machine seals for high debris | ✓ | ✓ | ✓ | ✓ | ✓ | ✓ |
| Front and rear track roller frame mounted striker bars (requires narrow shoes) | • | • | • | | | |
| Warning light | ✓ | ✓ | ✓ | ✓ | ✓ | ✓ |
| Heavy duty grab handles | ✓ | ✓ | ✓ | ✓ | ✓ | ✓ |
| Ripper with rear seal package | • | • | • | • | • | • |
| Winch | • | • | • | • | • | • |

✓ Included/Required in Waste Handler Package

★ Recommended for Waste Handler

• Compatible Waste Handler Attachment

D6/D6 XE Waste Handler Specifications

Dimensions – Rear Attachments

Add the following to the total length of the machine when these rear attachments are installed.

| | | Winch | | Ripper | | Drawbar or Counterweight* | | Striker Box | |
|---------------------------|--------------------|--------|---------|---------|---------|---------------------------|--------|-------------|---------|
| Push Arm and Angle Dozers | D6, D6 LGP (30 in) | 441 mm | 17.4 in | 1179 mm | 46.4 in | 249 mm | 9.8 in | 478 mm | 18.8 in |
| | D6 LGP (36 in) | 416 mm | 16.4 in | 1154 mm | 45.4 in | 224 mm | 8.8 in | 453 mm | 17.8 in |
| VPAT Dozers | | 416 mm | 16.4 in | 1154 mm | 45.4 in | 224 mm | 8.8 in | 453 mm | 17.8 in |

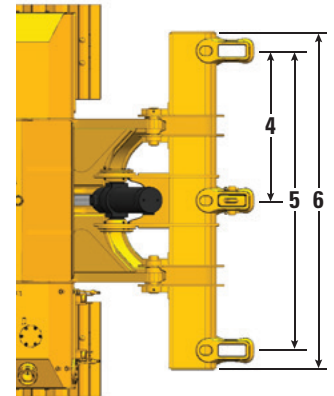
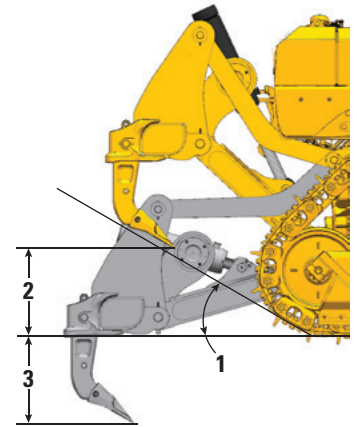
*Drawbar weight 119 kg (262 lb), 331 kg (730 lb) for each counterweight slab. The D6 dozer design provides improved balance. Counterweights are only recommended with heavier aftermarket blades.

Ripper

| | | |
|---|---------------------|-----------------|
| Type | Fixed Parallelogram | |
| Number of Pockets | 3 | |
| 1 Ramp Angle | 31 degrees | |
| 2 Maximum Clearance Raised (under tip) | 664 mm | 26.1 in |
| 3 Maximum Penetration | 571 mm | 22.5 in |
| 4 Pocket Spacing | 1000 mm | 39.4 in |
| 5 Shank Gauge | 2000 mm | 78.8 in |
| Shank Section | 74 mm × 175 mm | 2.9 in × 6.9 in |
| 6 Overall Beam Width | 2190 mm | 86 in |
| Beam Cross Section | 219 mm × 304 mm | 8.8 in × 12 in |
| Maximum Penetration Force* | 68.8 kN | 15,470 lbf |
| Pryout Force | 126 kN | 28,350 lbf |
| Ripper Weight | | |
| With One Shank | 1550 kg | 3,417 lb |
| Each Additional Shank | 73 kg | 161 lb |

Specifications based on D6 tractor configuration with Heavy Duty undercarriage, MS shoes, and straight ripper shanks.

*May vary based on configuration and machine weight.



D6/D6 XE Waste Handler Specifications

Winches

The D6 and D6 XE expand industry-leading winch capability with the introduction of available high pressure (27 600 kPa/4,000 psi) hydraulics capable of powering high performance hydraulic winches. These winches provide exceptional controllability for applications that require precise load placement. The D6 retains compatibility with PTO-driven winches for maximum power and efficiency. Winches of both styles are available from Caterpillar for factory or dealer installation, and integrate with the tractor's electronic and control system.

| Tractor Model | D6 | | | | D6 XE | |
|------------------------------------|------------------|--------------------|-----------------------|--------------------|------------------|--------------------|
| | PA56 (Low Speed) | | PA56 (Standard Speed) | | PA85 | |
| Winch model | PA56 (Low Speed) | | PA56 (Standard Speed) | | PA85 | |
| Winch Drive | PTO Mechanical | | PTO Mechanical | | Hydraulic | |
| Control | Electrical | | Electrical | | Electrical | |
| Operating Weight* | 1582 kg | 3,487 lb | 1582 kg | 3,487 lb | 1530 kg | 3,374 lb |
| Oil Capacity | 43.5 L | 11.5 gal | 43.5 L | 11.5 gal | 19 L | 5 gal |
| Increased Tractor Length | | | | | | |
| Standard/LGP | 516 mm | 20.4 in | 516 mm | 20.4 in | 516 mm | 20.4 in |
| LGP (36 in) | 365 mm | 14.4 in | 365 mm | 14.4 in | 365 mm | 14.4 in |
| Drum Diameter | 254 mm | 10 in | 254 mm | 10 in | 254 mm | 10 in |
| Rope Diameter | | | | | | |
| Recommended | 22 mm | 0.88 in | 22 mm | 0.88 in | 22 mm | 0.88 in |
| Optional | 25 mm | 1.0 in | 25 mm | 1.0 in | 25 mm | 1.0 in |
| Drum Working Capacity | | | | | | |
| 22 mm (0.88 in) | 55 m | 180 ft | 55 m | 180 ft | 55 m | 180 ft |
| 25 mm (1.0 in) | 50 m | 163 ft | 50 m | 163 ft | 50 m | 163 ft |
| Cable Ferrule Size (O.D. × Length) | 54 mm × 67 mm | 2.1 in × 2.6 in | 54 mm × 67 mm | 2.1 in × 2.6 in | 54 mm × 67 mm | 2.1 in × 2.6 in |
| Maximum Bare Drum | | | | | | |
| Line Pull** | 399 kN | 89,800 lb | 399 kN | 89,800 lb | 378 kN | 85,000 lb |
| Line Speed*** | 17 m/min | 57 ft/min | 33 m/min | 107 ft/min | 23 m/min | 77 ft/min |
| Maximum Full Drum**** | | | | | | |
| Line Pull** | 399 kN | 89,800 lb | 399 kN | 89,800 lb | 220 kN | 49,500 lb |
| Line Speed*** | 29 m/min | 94 ft/min | 55 m/min | 179 ft/min | 40 m/min | 132 ft/min |

*Operating Weight includes winch, mounting hardware, oil, and recommended wire rope.

**Maximum line pull is lesser of calculated line pull at maximum tractor PTO output torque/hydraulic power or catalog breaking strength of maximum size new IWRC IPS wire rope.

***Maximum line speed is calculated on-load line speed at maximum tractor engine PTO speed or maximum hydraulic power.

****Full drum as defined by SAE J1158.

D6/D6 XE Waste Handler Specifications

Track Shoes

| | Moderate Service | Extreme Service | Extreme Service Trapezoidal |
|---|------------------|-----------------|-----------------------------|
| Heavy Duty Extended Life (HDXL) | | | |
| D6/D6 XE – 42 Link | | | |
| 560 mm (22 in) | ✓ | ✓ | ★ |
| 610 mm (24 in) | ✓ | ✓ | ★ |
| D6 LGP/D6 XE LGP – 42 Link | | | |
| 610 mm (24 in) | ✓ | ✓ | |
| 760 mm (30 in) | ✓ | ✓ | ★ |
| D6 LGP/D6 XE LGP (36 in) – 45 Link | | | |
| 610 mm (24 in) | ✓ | ✓ | ★ |
| 760 mm (30 in) | ✓ | ✓ | ★ |
| 915 mm (36 in) | ✓ | ✓ | ★ |
| D6 VPAT/D6 XE VPAT – 45 Link | | | |
| 610 mm (24 in) | ✓ | ✓ | |
| D6 LGP VPAT/D6 XE LGP VPAT– 46 Link | | | |
| 610 mm (24 in) | ✓ | ✓ | ★ |
| 660 mm (26 in) | ✓ | | |
| 710 mm (28 in) | ✓ | | |
| 760 mm (30 in) | ✓ | ✓ | ★ |
| D6 LGP VPAT/D6 XE LGP VPAT (36 in) – 46 Link | | | |
| 760 mm (30 in) | ✓ | ✓ | ★ |
| 915 mm (36 in) | ✓ | ✓ | ★ |

★ Recommended for Waste Handler

✓ Available for Waste Handler

* Not available in all areas. Please consult your Cat dealer for details.

Blade Cutting Edges

Cat FirstCut™ cutting edges are available for Semi-Universal (SU) blades. FirstCut edges provide superior penetration in tough compacted, rocky or frozen soils resulting in up to 35% larger payload mass and up to 17% improvement in productivity. Consult with your Cat dealer for more benefits and details.

Air Conditioning System

The air conditioning system on this machine contains the fluorinated greenhouse gas refrigerant R134a (Global Warming Potential = 1430). The system contains 1.36 kg of refrigerant which has a CO₂ equivalent of 1.946 metric tonnes.

Advanced Cabin Filtration

Operator Cabin

- Distributed HVAC ducting with automatic temperature control and blower speed provides ultimate operator comfort with less user input.
- Reduced maintenance of the condenser core with automatic reversing fans.
- Cat Advanced Cabin Filtration is standard.

Cat Advanced Cabin Filtration

- Operator protection from respirable particulate (0.3-10 micron size).
- Sustainably pressurized cab (US Silica compliant).
- Reduced maintenance with longer life, high efficiency filters.
- Protection for all cabin components: electronics, etc.
- Helps meet U.S. Occupational Safety and Health Administration Silica Rule Table 1 requirements for operator cabs.
- Multi-tiered filter offerings for optional efficiency upgrades. Contact Cat dealer for availability.
 - MERV 16 – Standard Equipment
 - HEPA
 - Activated Carbon + HEPA
 - ABEK1 + HEPA

Standards

Rollover Protective Structure (ROPS)/ Falling Object Protective Structure (FOPS)

- ROPS meets ISO 3471:2008, FOPS meets ISO 3449:2005 Level II.

Brakes

- Brakes meet the International Standard ISO 10265:2008.

Sound Level Information

Hearing protection may be needed when the machine is operated with an open operator station, in a noisy environment, with a cab that is not properly maintained, or when the doors and windows are open for extended periods of time.

| Sound Level | | | Test Method |
|-------------------------------|-------|------------|--------------------------------|
| Operator Sound Pressure Level | D6 | 77 dB(A)* | “ISO 6396:2008” ⁽¹⁾ |
| | D6 XE | 76 dB(A)* | |
| Exterior Sound Power Level | D6 | 113 dB(A) | “ISO 6395:2008” ⁽²⁾ |
| | | 111 dB(A)* | “ISO 6395:1988” ⁽²⁾ |
| | D6 XE | 111 dB(A) | “ISO 6395:2008” ⁽²⁾ |
| | | 111 dB(A)* | “ISO 6395:1988” ⁽²⁾ |

*Including machines required to meet applicable regional regulations of Ukraine, United Kingdom, and Countries that Adopt the “EU Directives”; or machines equipped with the sound-suppression package.

⁽¹⁾The measurement was conducted at 70% of the maximum engine cooling fan speed. The sound level may vary at different engine cooling fan speeds. The measurement was conducted with the cab doors and the cab windows closed. The cab was properly installed and maintained.

⁽²⁾The measurement was conducted at 70% of the maximum engine cooling fan speed. The sound level may vary at different engine cooling fan speeds.

The sound levels listed above include both measurement uncertainty and uncertainty due to production variation.

D6/D6 XE Waste Handler Specifications

Dozer Technology Features

Assist technology features help operators of varied experience levels get the job done faster and more accurately. Grade and Command offerings help further enhance your productivity, efficiency and job site safety.

The cab is Third Party Grade Control Ready, equipped with CAN interface, harness pass throughs and mounting features to make it easier to install the grade control system of your choice.

ARO with Assist Package

| | |
|-------------------------------|--|
| Attachment Ready Option (ARO) | ARO provides wiring and mounting provisions for dealer installation of Grade with 3D, AccuGrade, UTS, or other grade control systems. |
| Cat Grade with Slope Assist™ | Slope Assist automatically maintains pre-established blade position without a GNSS/GPS signal – no additional hardware or software needed. For machines with 3D, operators can easily switch back and forth from full 3D automatics to Slope Assist. |
| Steer Assist | Steer Assist automates track and blade tilt steering. Helps reduce operator fatigue by automatically maintaining straight travel with light loads or heavy loads on flat ground and cross slopes. No GNSS/GPS required. |
| Stable Blade | Stable Blade works seamlessly with operator inputs to help produce a smoother surface when operating manually. |
| Slope Indicate | Slope Indicate is included in the main machine display and shows side slope and uphill/downhill grades to help operators with slope work. |
| Blade Load Monitor | Blade Load Monitor gives you real-time feedback on current load versus the optimal blade load based on your ground conditions. Actively monitors machine load and track slip to help you reach optimal pushing capacity. ¹ |
| Traction Control | Traction Control automatically reduces track slip to save you time, fuel and track wear. ¹ |
| AutoCarry™ | AutoCarry automates blade lift to help you maintain consistent blade load and help reduce track slip. ¹ |

Grade 3D with Assist Package

Includes all features from the ARO with Assist Package listed above, plus:

| | |
|-------------------------------------|---|
| Cat Grade with 3D | Factory integrated Cat Grade with 3D uses GNSS/GPS to control the blade so you can get to design plan faster. Low profile antennas are integrated into the cab roof and GNSS/GPS receivers are mounted inside the cab for better protection. ² |
| Steer Assist 3D | Automatically follow guidance lines from site design plans (or Infield designs) under light load or heavy load. ² |
| Dedicated Touchscreen Grade Display | Full-color Grade operator interface is intuitive and easier to use. The 254 mm (10 in) touchscreen uses an Android OS platform and operates like a smart phone. |

Remote Control/Cat Command

| | |
|--|--|
| Remote Control Ready Cab (Standard) | Cab is Remote Control Ready from the factory with external connector for dealer installation of the Cat Command remote control system. |
| Command for Dozing ² (Optional) | Cat Command remote control technology provides full dozer maneuverability from a safe distance when working in hazardous environments. Command offers the choice of line-of-sight consoles or long-distance operator stations (non-line-of-sight). |

¹Feature not operational indoors or in areas where a GNSS/GPS signal is not available.

²Requires Software Enabled Attachment (SEA) installation when not configured from the factory.

Note: Grade and Assist technologies, except Slope Indicate, Blade Load Monitor and Traction Control, are not compatible with Angle blades or specialty blades from Cat Work Tools. Please consult with your Cat dealer for details.

D6/D6 XE Waste Handler Standard and Optional Equipment

Standard and Optional Equipment

Standard and optional equipment may vary. Consult your Cat dealer for details.

| | Standard | Optional | | Standard | Optional |
|---|----------|----------|--|----------|----------|
| POWER TRAIN | | | OPERATOR ENVIRONMENT | | |
| Fully-automatic 4-speed Transmission with Lock Up Clutch (LUC) torque divider | D6 | | High debris cab, fully redesigned with Integrated ROPS and FOPS, impact resistant polycarbonate doors, solid side windows for improved sealing, with Cat Advanced Cabin Filtration for improved performance and filter life | + | |
| XE Electric Drive Power Train | D6 XE | | Full-color 254 mm (10 inch) liquid crystal touch screen display | ✓ | |
| Differential Steering System | ✓ | | Integrated rearview camera | ✓ | |
| Cat C9.3B diesel engine with thermal shield and liquid cooled turbo | + | | Joystick control – ARO | | ✓ |
| Engine air precleaner with dust ejection and screen for high debris applications | + | | Adjustable operator controls/armrests | ✓ | |
| Double reduction planetary final drives, guarded | | * | Cloth seat with mechanical adjustable lumbar support | ✓ | |
| Automatic ether starting aid | ✓ | | Deluxe leather heated/ventilated seat with electronic adjustable lumbar support | | ✓ |
| Electric fuel priming pump | ✓ | | Cab mounted modular HVAC system with automatic reversing fans. Automatic temperature and blower control with distributed ducting. | ✓ | |
| Electronic parking brake | ✓ | | Cat Advanced Cabin Filtration with powered precleaner with MERV 16, HEPA, and Activated Charcoal options | + | |
| Engine air filter with electronic service indicator | ✓ | | Viscous cab mounts for improved ride | ✓ | |
| Fuel water separator with electronic service indicator | ✓ | | Entertainment radio with Bluetooth and microphone | ✓ | |
| Jacket water heater, 110V OR 220V based on sales region | ✓ | | USB and AUX ports | ✓ | |
| Diesel Exhaust Fluid (DEF) System – Electronic fill indicator, heated lines/tank | ✓ | | Enhanced Cab Storage Solutions | ✓ | |
| CAT TECHNOLOGY | | | Adjustable foot pegs | ✓ | |
| Slope Indicate | ✓ | | Quick opening floor plate | + | |
| ARO with Assist Package | | ✓ | Screen ready, side and rear | ✓ | |
| – Attachment Ready Option (ARO) | | | Operator presence switch | ✓ | |
| – Slope Assist | | | | | |
| – Steer Assist | | | | | |
| – Stable Blade | | | | | |
| – Blade Load Monitor | | | | | |
| – Traction Control | | | | | |
| – AutoCarry | | | | | |
| Grade 3D with Assist Package | | ✓ | | | |
| – Full-color 10-inch (254 mm) touchscreen grade display | | | | | |
| – Steer Assist 3D | | | | | |
| – Grade receivers and antennas | | | | | |
| – Grade Software Enabled Attachment (SEA) | | | | | |
| – ARO with Assist features | | | | | |
| Third Party Grade Control Ready Cab | ✓ | | | | |
| Compatibility with radios and base stations from Trimble, Topcon, and Leica | ✓ | | | | |
| Capability to install 3D grade systems from Trimble, Topcon, and Leica | ✓ | | | | |
| Product Link, Cellular | ✓ | | | | |
| Product Link – Dual Cellular/Satellite | | ✓ | | | |
| Remote Flash/Troubleshoot | ✓ | | | | |
| Grade Connectivity | | ✓ | | | |
| Operator ID | ✓ | | | | |
| Machine Security – Passcode | ✓ | | | | |
| Machine Security – Bluetooth | | ✓ | | | |
| Remote Control Ready | ✓ | | | | |
| Cat Command for Dozing | | ✓ | | | |

+Included in Waste Handler package.

*Recommended for Waste Handler.

(continued on next page)

D6/D6 XE Waste Handler Standard and Optional Equipment

Standard and Optional Equipment *(continued)*

Standard and optional equipment may vary. Consult your Cat dealer for details.

| | Standard | Optional | | Standard | Optional |
|---|----------|-------------|--|----------|----------|
| UNDERCARRIAGE | | | HYDRAULICS | | |
| Structurally improved track roller frame | ✓ | | Load sensing hydraulics – dozer lift and tilt | ✓ | |
| Undercarriage with 8 bottom rollers | ✓ | | Independent steering hydraulics | ✓ | |
| Waste Undercarriage, HDXL ONLY | + | | Ripper ready rear hydraulics | D6 | |
| Heavy Duty (HDXL with DuraLink™) | ✓ | | Ripper and winch ready rear hydraulics | D6 XE | D6 |
| Extreme Service track shoes with trapezoidal holes | + | | Single axis ripper control | ✓ | |
| Carrier roller | ✓ | | Dual axis ripper/winch control | | ✓ |
| Hydraulically adjustable track | ✓ | | Hydraulic automatically reversing, zero speed capable cooling fan | ✓ | |
| Replaceable sprocket rim segments | ✓ | | Electronic Hydraulic lockout switch | ✓ | |
| BLADES | | | ELECTRICAL | | |
| Semi-Universal, ARO mounts | | ✓ | Lights – 6 LED | ✓ | |
| Semi-Universal, LGP with ARO mounts | | ✓ | Premium lights with guards, 12 LED for 360 degree light coverage | | ✓ |
| Semi-Universal, Waste | + | | Backup alarm | ✓ | |
| Semi-Universal, LGP Waste | + | | Integrated beacon warning light (does not impact shipping height) | + | |
| Straight blade, LGP with ARO mounts | | ✓ | Communication radio ready kit | | ✓ |
| Straight blade, LGP Waste | + | | Converter: 15 Amp, 12V outlet | ✓ | |
| VPAT, ARO mounts | | ✓ | Diagnostic connector | ✓ | |
| VPAT, LGP with ARO mounts | | ✓ | Forward warning horn | ✓ | |
| Foldable VPAT, LGP with ARO mounts | | EU only | Fuse panel and main power relay located inside cab | ✓ | |
| Angle blade | | NA only | | | |
| Caterpillar Performance cutting edges | | Dealer only | | | |

+Included in Waste Handler package.

*Recommended for Waste Handler.

(continued on next page)

D6/D6 XE Waste Handler Standard and Optional Equipment

Standard and Optional Equipment (continued)

Standard and optional equipment may vary. Consult your Cat dealer for details.

| | Standard | Optional | | Standard | Optional |
|---|----------|----------|--|----------|----------------|
| SERVICE AND MAINTENANCE | | | ATTACHMENTS | | |
| 30-minute cab removal | ✓ | | Drawbar | | ✓ |
| Ecology drains | ✓ | | High lift multi-shank ripper with straight or curved shanks | | ✓ |
| Ecology drains with high speed oil power train and engine oil change | | ✓ | Lightweight rear tow point | | ✓ |
| Ground level service center with remote electrical disconnect, access light, secondary shutdown switch and hour meter | ✓ | | Striker bar box | ✓ | |
| Fuel tank, 341 L (90 gal) | ✓ | | Counterweights (not recommended unless using heavier aftermarket blades) | | ✓ |
| Fuel tank, 341 L (90 gal), fast fill ready | D6 XE | D6 | PACCAR PA56 winch, low speed PTO | | D6 |
| Wiggins style fast fill nozzle | | ✓ | PACCAR PA85 winch, variable speed hydraulic | | ✓ |
| Mounting provisions for grease gun, shovel, and fire extinguisher | ✓ | | PACCAR PA56 winch, standard speed PTO | | D6 Dealer only |
| Perforated radiator doors, louvered and hinged | ✓ | | Allied H6H winch, variable speed hydraulic | | Dealer only |
| Rear access ladder | ✓ | | Fairlead Assembly; 3-roller, fits PA55, PA56, and PA85 winches | | ✓ |
| Rear work light | | ✓ | Retrofit kit (4th roller); fits PA55, PA56, and PA85 winches | | ✓ |
| Refilling fuel pump | | EU only | GUARDING AND SCREENS | | |
| Removable engine enclosures, perforated and hinged, with under hood work light | ✓ | | Heavy duty sealed and hinged bottom guards | + | |
| Removable engine enclosures, sound suppressed and hinged, with under hood work light | | EU only | Heavy duty sealed quick access bottom guards** | | Push Arm only |
| S-O-S SM sampling ports | ✓ | | Heavy duty grab handles | + | |
| Maintenance free equalizer bar | ✓ | | Open Sweeps guarding | | ✓ |
| Certified ISO 14567 tie off points (3) | ✓ | | Forestry Sweeps guarding with full canopy | | ✓ |
| Vandalism protection for fluid compartments and battery box | ✓ | | Hinged rear screen | | ✓ |
| Dedicated shipping tie downs, rear | ✓ | | Hinged side screens | | ✓ |
| Shipping tie downs, front bracket | | EU only | Fuel tank guard (with or without fast fill) | + | |
| BATTERIES, STARTERS, ALTERNATORS AND FLUIDS | | | Guards for premium lights, front and side | | * |
| 150 Amp ducted alternator | + | | Machine seals for high debris | + | |
| Heavy duty batteries, two maintenance-free 12V (1,400 CCA) (24V system) | ✓ | | Front and rear striker bars | | Dealer only |
| Heavy duty, 24V starter | ✓ | | Rear guard with seals for non striker box and winch applications | | * |
| Extended Life Engine coolant, -37° C (-35° F) | ✓ | | +Included in Waste Handler package. | | |
| Extended Life Arctic engine coolant, -51° C (-60° F) | | ✓ | *Recommended for Waste Handler. | | |
| Bio hydraulic oil, -37° C (-35° F) | | EU only | **Please check with your Cat dealer for availability dates. | | |



D6/D6 XE

Heavy Duty/Forestry

Take on the demands of land clearing and forestry work with factory-installed equipment designed to help protect the operator and the machine in harsh applications.

Next Generation Performance

- Up to 35 percent better fuel efficiency.¹
- Use up to 23 percent less fuel.²
- D6 with fully automatic 4-speed transmission continuously adjusts for optimal efficiency and power to the ground.
- D6 XE with Electric Drive provides constant power to the ground and maximum efficiency.
- Class-leading maneuverability and power give you more agility and faster cycle times.
- Unprecedented ease of operation – automatically optimizes for the application with no need to shift gears.
- Lower greenhouse gas emissions – up to 23 percent less CO₂.

Equipped for the Job

- Single plane cooling system with automatic reversing fan aids cleanout. High debris engine air filtration system extends filter life.
- Forestry cab with impact resistant polycarbonate doors for added impact resistance without the use of door screens for unobstructed visibility.
- Forestry (closed) sweeps provide further protection for the operator and machine with an enclosed canopy over the cab and a perforated canopy over the hood for protection while allowing upward visibility. Optional open sweeps are also available for applications where a canopy is not desired.
- Side and rear screens help further protect the operator and machine from debris. Hinged screens provide easy access to windows for cleaning and maintenance.
- High debris seals offer additional protection around fenders, fuel tank, radiator guard and rear hood support. Provides a seal across the top, rear of the case to prevent high debris entry.
- Heavy duty bottom guards and fuel tank guard to help shield major machine components. Sealed bottom guards available on push arm machines.
- 12 premium LED lights with light guards provide 360-degree light coverage.
- Heavy Duty Extended Life (HDXL) undercarriage. Track bushings can be turned and re-sealed mid-life. Press-fit bushings and PPR2 pin retention are particularly well suited for impact applications like forestry.
- Heavy duty grab handles aid access/egress.

All comparisons to 2014-2016 3-speed D6T (U.S. EPA Tier 4 Final/EU Stage IV).
Maintenance comparisons to D6T over initial 10,000 hours of operation.

¹ Material moved per liter/gallon of fuel.

² Liters/gallons per hour.



D6/D6 XE Heavy Duty/Forestry Specifications

Engine

| | | |
|--|---|---------------------|
| Engine Model | Cat C9.3B | |
| Emissions | U.S. EPA Tier 4 Final, EU Stage V, Korea Tier 5 | |
| Net Power – D6 2,200 rpm/D6 XE 1,700 rpm | | |
| ISO 9249/SAE J1349 | 161 kW | 215 hp |
| ISO 9249 (DIN) | 219 mhp | |
| D6 Engine Power – 1,200 rpm | | |
| ISO 14396 | 187 kW | 251 hp |
| ISO 14396 (DIN) | 254 mhp | |
| D6 XE Engine Power – 1,400 rpm | | |
| ISO 14396 | 177 kW | 237 hp |
| ISO 14396 (DIN) | 241 mhp | |
| Bore | 115 mm | 4.5 in |
| Stroke | 149 mm | 5.9 in |
| Displacement | 9.3 L | 567 in ³ |

- The Cat C9.3B engine features a high pressure common rail fuel system, simplified engine system electronics, and simplified air system through the removal of the previously used exhaust gas recirculation (EGR) system.
- The XE drive train allows the engine to operate in a tighter rpm range, 1,400-1,700 rpm, which helps extend engine life and provide improved fuel economy. The increased drive train efficiency also allows the machine to provide more engine power to the ground, resulting in greater machine performance.
- Net power advertised is the power available at the engine flywheel when the engine is equipped with a fan, air cleaner, clean emissions module and alternator.
- Advertised power is tested per the specified standard in effect at the time of manufacture.
- No derating required up to 2286 m (7,500 ft). Above this, automatic derating occurs.

Cat diesel engines are required to use ULSD (ultra-low sulfur diesel fuel with 15 ppm of sulfur or less) or ULSD blended with the following lower-carbon intensity fuels up to:

- ✓ 20% biodiesel FAME (fatty acid methyl ester)*
- ✓ 100% renewable diesel, HVO (hydrogenated vegetable oil) and GTL (gas-to-liquid) fuels

Refer to guidelines for successful application. Please consult your Cat dealer or “Caterpillar Machine Fluids Recommendations” (SEBU6250) for details.

**Engines with no aftertreatment devices can use higher blends, up to 100% biodiesel.*

D6 XE Drive Train

| | |
|-----------------------|----------------|
| Type | Electric Drive |
| Electric Drive System | 715 Volts |
| Nominal Voltage | |

Fluid/Refill Capacities

| | | |
|-------------------------|---------|---------------|
| Fuel Tank | 341 L | 90 gal |
| DEF Tank | 28 L | 7.4 gal |
| Cooling System – D6 | 63 L | 16.6 gal |
| Cooling System – D6 XE | 77 L | 20.3 gal |
| Engine Crankcase | 24.5 L | 6.5 gal |
| Power Train Oil – D6 | 148 L | 39.1 gal |
| Power Train Oil – D6 XE | 210 L | 55.5 gal |
| Final Drives (each) | 18.2 L | 4.8 gal |
| Roller Frames (each) | 65-85 L | 17.2-22.5 gal |
| Pivot Shaft Compartment | 2.8 L | 0.74 gal |
| Hydraulic Tank Oil | 60 L | 15.8 gal |
| Hydraulic System | 77 L | 20.3 gal |

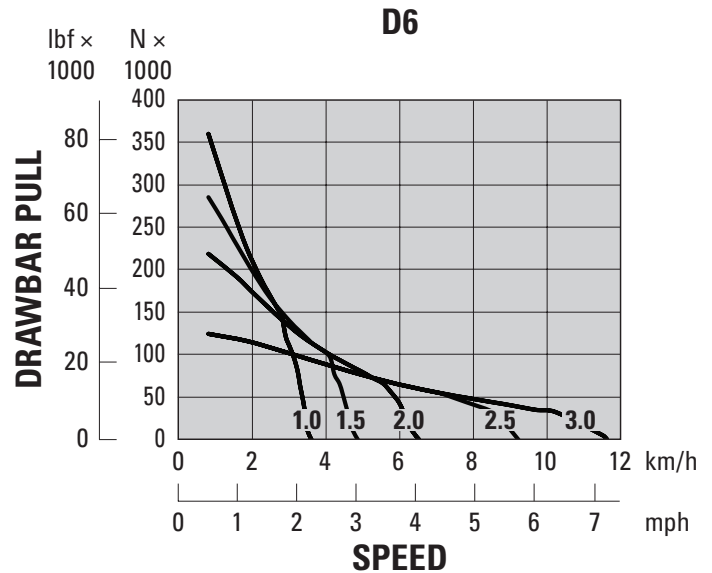
D6/D6 XE Heavy Duty/Forestry Specifications

Maximum Drawbar Power

| | | |
|-------|--------|--------|
| D6 | 114 kW | 153 hp |
| D6 XE | 119 kW | 160 hp |

D6 Travel Speed

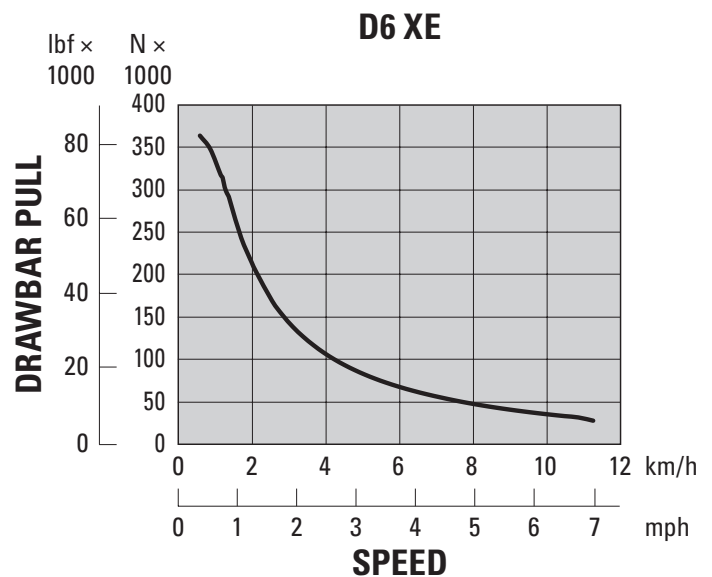
| | | |
|-------------|-----------|---------|
| 1.0 Forward | 3.6 km/h | 2.2 mph |
| 1.5 Forward | 4.9 km/h | 3.0 mph |
| 2.0 Forward | 6.5 km/h | 4.0 mph |
| 2.5 Forward | 9.2 km/h | 5.7 mph |
| 3.0 Forward | 11.7 km/h | 7.2 mph |
| 1.0 Reverse | 3.6 km/h | 2.2 mph |
| 1.5 Reverse | 4.9 km/h | 3.0 mph |
| 2.0 Reverse | 6.5 km/h | 4.0 mph |
| 2.5 Reverse | 8.7 km/h | 5.4 mph |
| 3.0 Reverse | 11.7 km/h | 7.2 mph |



NOTE: Usable pull will depend on traction and weight of machine.

D6 XE Travel Speed

| | | |
|-------------|-----------|---------|
| 1.0 Forward | 3.6 km/h | 2.2 mph |
| 1.5 Forward | 4.9 km/h | 3.0 mph |
| 2.0 Forward | 6.5 km/h | 4.0 mph |
| 2.5 Forward | 9.2 km/h | 5.7 mph |
| 3.0 Forward | 11.7 km/h | 7.2 mph |
| 1.0 Reverse | 3.6 km/h | 2.2 mph |
| 1.5 Reverse | 4.9 km/h | 3.0 mph |
| 2.0 Reverse | 6.5 km/h | 4.0 mph |
| 2.5 Reverse | 9.2 km/h | 5.7 mph |
| 3.0 Reverse | 11.7 km/h | 7.2 mph |



NOTE: Usable pull will depend on traction and weight of machine.

- The fully automatic D6 4-speed transmission, with lock-up clutch torque divider, continuously optimizes gear and engine speed for the application.
- The D6 XE Electric Drive power train has no gears to shift. The dozer automatically optimizes power and efficiency for the application and provides constant power to the ground.
- Thirty ground speed selections are available for both power trains, from 0.0 to 3.0 in 0.1 increments.

D6/D6 XE Heavy Duty/Forestry Specifications

Hydraulic Controls – Maximum Operating Flows

| | D6 (1,900 rpm engine speed*) | | D6 XE (1,700 rpm engine speed*) | |
|--|---------------------------------|------------|------------------------------------|------------|
| Implement Pump Maximum Flow | 212 L/min | 56 gal/min | 212 L/min | 56 gal/min |
| Steering Pump Maximum Flow | 198 L/min | 52 gal/min | 240 L/min | 63 gal/min |
| Fan Pump Flow at Maximum Fan (1,550 rpm) | 42 L/min | 11 gal/min | — | — |
| Fan Pump Flow at Maximum Fan (1,625 rpm) | — | — | 44 L/min | 12 gal/min |

*Engine speed varies with load and travel speed. A high idle/low working load speed shown.

Hydraulic Controls – Maximum Operating Pressures

| | | |
|-----------------------------------|-------------------|-----------------|
| Implement Relief* | 27 600 ± 500 kPa | 4,000 ± 73 psi |
| Steering – D6 (89 cc pump)** | | |
| Electronic Relief | 42 500 ± 1000 kPa | 6,168 ± 145 psi |
| System Maximum Relief | 47 800 ± 1000 kPa | 6,938 ± 145 psi |
| Steering – D6 XE (100 cc pump)*** | | |
| Electronic Relief | 44 500 ± 1000 kPa | 6,459 ± 145 psi |
| System Maximum Relief | 47 800 ± 1000 kPa | 6,938 ± 145 psi |

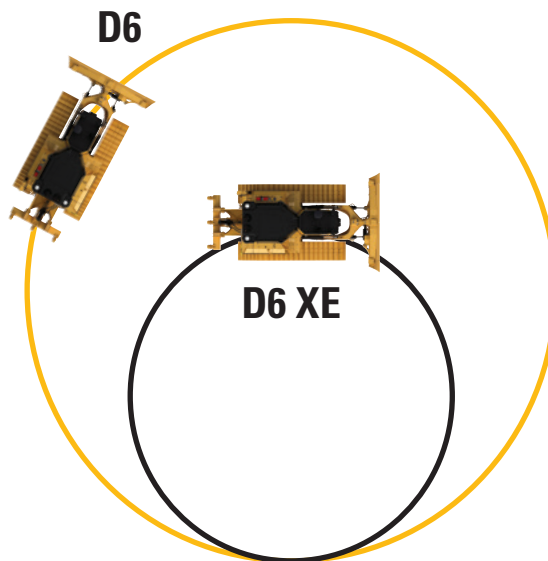
*Implement relief pressure increased over prior model D6 tractors. Consult with your dealer prior to using older vintage or third party implements.

**The same differential steering system is used for both power trains. This system maintains full power to both tracks to provide best-in-class turning with a loaded blade.

***The D6 XE power train utilizes a larger steering pump and enhanced steering controls to provide more steering power, compared to the D6 power train, to turn larger loads and to improve maneuverability. This includes the ability to counter-rotate in gear.

Steering

The D6 XE power train provides up to a 45 percent steering radius reduction compared to the D6. The D6 XE offers in-gear counter rotation for increased maneuverability.



D6/D6 XE Heavy Duty/Forestry Specifications

D6/D6 XE*

| | | |
|--|----------------------------------|-----------------------|
| Operating Weight** | 23 030 kg | 50,772 lb |
| Shipping Weight*** | 20 080 kg | 44,269 lb |
| Ground Pressure (ISO 16754) | 57 kPa | 8.2 psi |
| Undercarriage (Standard) | 42 Section with 8 Bottom Rollers | |
| 1 Track Gauge | 1.930 m | 76 in |
| 2 Width of Maximum Track Shoe | 0.610 m | 24 in |
| 3 Width over Tracks | 2.540 m | 100 in |
| Width over Trunnions | 2.692 m | 106 in |
| 4 Length of Track on Ground | 2.964 m | 116.7 in |
| Ground Contact Area (ISO 16754) | 3.992 m ² | 6,188 in ² |
| Track Pitch | 0.2028 m | 7.9 in |
| Grouser Height (Moderate Service) | 0.065 m | 2.6 in |
| Ground Clearance | 0.361 m | 14.2 in |
| Oscillation at Front Idler | 0.103 m | 4.0 in |
| 5 Machine Height**** | 3.188 m | 125.5 in |
| 6 Length of Machine without Blade | 4.730 m | 186.2 in |

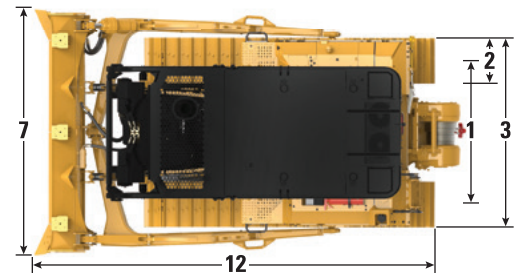
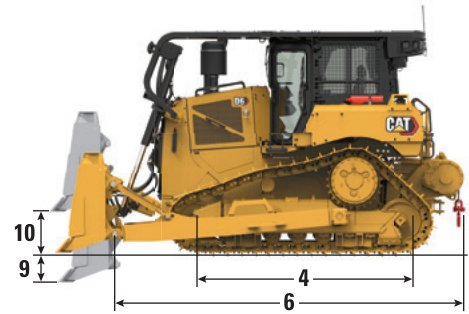
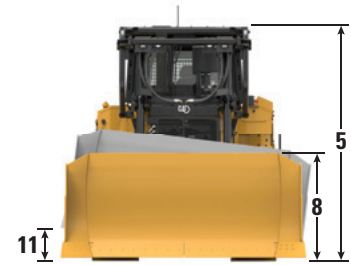
All dimensions above with HDXL undercarriage with Moderate Service shoes of maximum width for configuration, 6 SU blade, forestry options, and calculated per ISO 16754 unless otherwise specified.

*XE power train adds 0.7 kPa (0.1 psi) and 273 kg (600 lb) to the published ground pressure and weights.

**Operating weight includes blade, lubricants, coolant, full fuel tank, ROPS/FOPS cab, drawbar, and 75 kg (165 lb) operator. Reference ripper and winch sections for those specifications.

***Shipping weight includes blade lift cylinders, lubricants, coolant, 10% fuel, ROPS/FOPS cab, and drawbar.

****Machine height from tip of grouser to top of Product Link Antenna. For Sweeps, add 60 mm (2.36 in) to overall machine height. For forestry sweeps, add 83 mm (3.26 in). With Extreme Service Track Shoes add 12 mm (0.5 in). When Cat Grade with 3D antennas are installed there is no addition to machine height.



Blades

| Configuration | 6 SU | | 6A | |
|--|---------------------|--------------------|---------------------|--------------------|
| | Capacity (ISO 9246) | 5.7 m ³ | 7.5 yd ³ | 4.2 m ³ |
| 7 Width across End Bits | 3.312 m | 10.87 ft | 4.389 m | 14.40 ft |
| Width without End Bits | 3.246 m | 10.65 ft | 4.250 m | 13.94 ft |
| Width across End Bits (Blade Angled) | N/A | | 3.982 m | 13.06 ft |
| Width without End Bits (Blade Angled) | N/A | | 3.858 m | 12.66 ft |
| Maximum Blade Angle | N/A | | 25 degrees | |
| 8 Height | 1.408 m | 4.62 ft | 1.150 m | 3.77 ft |
| 9 Dig Depth | 0.502 m | 19.8 in | 0.595 m | 23.4 in |
| 10 Lift Height | 1.180 m | 46.5 in | 1.084 m | 42.7 in |
| 11 Maximum Tilt at Blade Corner | 0.564 m | 22.2 in | 0.599 m | 23.6 in |
| Maximum Tilt Angle | 9.8 degrees | | 7.8 degrees | |
| Pitch Adjustment | ±4.2 degrees | | N/A | |
| 12 Length of Machine (Blade Straight) | 5.436 m | 17.83 ft | 5.377 m | 17.64 ft |
| Length of Machine (Blade Angled) | N/A | | 6.418 m | 21.06 ft |
| Weight (Blade) | 1385 kg | 3,053 lb | 1265 kg | 2,789 lb |
| Weight (Blade and Push Arms) | 2620 kg | 5,777 lb | 3406 kg | 7,509 lb |

D6/D6 XE Heavy Duty/Forestry Specifications

D6/D6 XE* LGP VPAT (30 in)

| | | |
|--|-----------------------------------|-----------------------|
| Operating Weight** | 23 745 kg | 52,349 lb |
| Shipping Weight*** | 21 890 kg | 48,259 lb |
| Ground Pressure (ISO 16754) | 42 kPa | 6.0 psi |
| Undercarriage (Standard) | 46 Section with 8 Bottom Rollers | |
| Undercarriage (Optional) | 46 Section with 10 Bottom Rollers | |
| 1 Track Gauge | 2.286 m | 90 in |
| 2 Width of Maximum Track Shoe | 0.760 m | 30 in |
| 3 Width over Tracks | 3.046 m | 119.9 in |
| 4 Length of Track on Ground | 3.355 m | 132.1 in |
| Ground Contact Area (ISO 16754) | 5.591 m ² | 8,666 in ² |
| Track Pitch | 0.2028 m | 7.9 in |
| Grouser Height (Moderate Service) | 0.065 m | 2.6 in |
| Ground Clearance | 0.395 m | 15.6 in |
| Oscillation at Front Idler | 0.121 m | 4.8 in |
| 5 Machine Height**** | 3.238 m | 127.5 in |
| 6 Length of Machine without Blade | 5.134 m | 202.1 in |

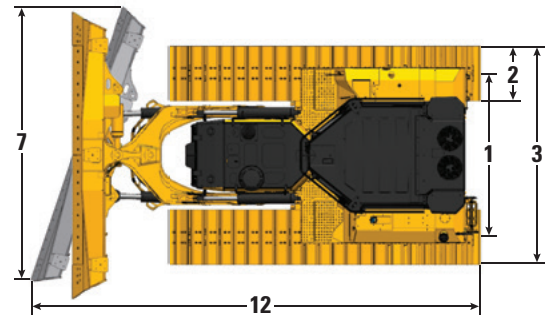
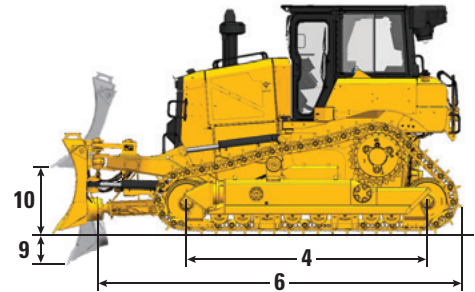
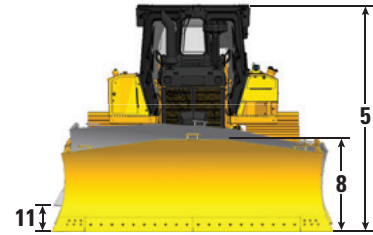
All dimensions above with HDXL undercarriage with Moderate Service shoes of maximum width for configuration, VPAT blade, forestry options, and calculated per ISO 16754 unless otherwise specified.

*XE power train adds 0.7 kPa (0.1 psi) and 273 kg (600 lb) to the published ground pressure and weights.

**Operating weight includes blade, lubricants, coolant, full fuel tank, ROPS/FOPS cab, drawbar, and 75 kg (165 lb) operator. Reference ripper and winch sections for those specifications.

***Shipping weight includes blade lift cylinders, C-frame, lubricants, coolant, 10% fuel, ROPS/FOPS cab, and drawbar.

****Machine height from tip of grouser to top of Product Link Antenna. For Sweeps, add 60 mm (2.36 in) to overall machine height. For forestry sweeps, add 83 mm (3.26 in). With Extreme Service Track Shoes add 12 mm (0.5 in). When Cat Grade with 3D antennas are installed there is no addition to machine height.



Standard VPAT Configuration Shown

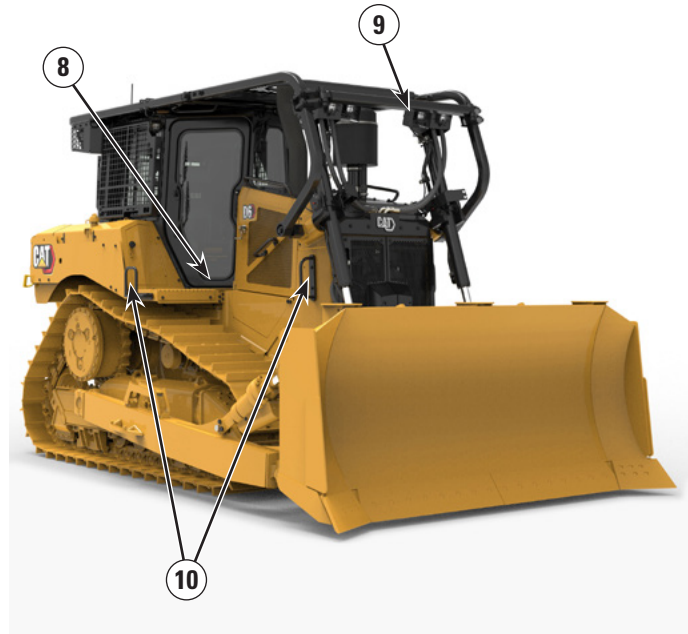
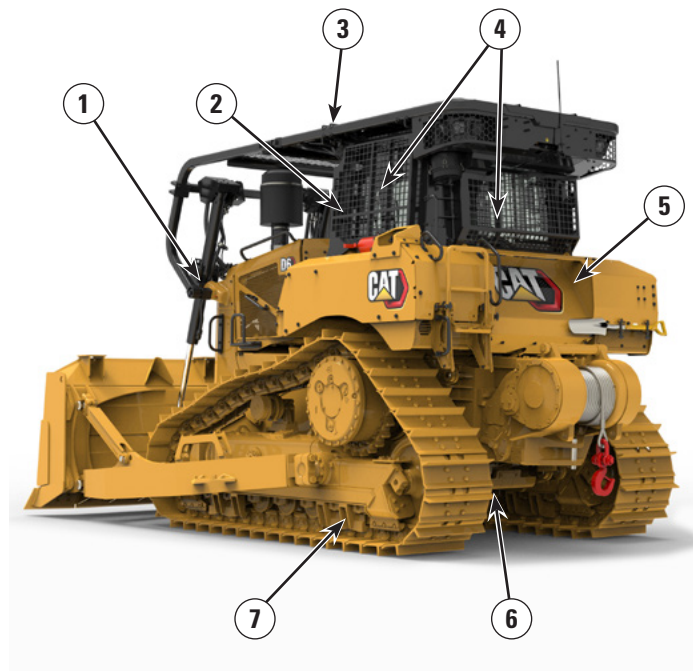
Blade

| Configuration | 6 VPAT LGP (30 in) | |
|--|--------------------|---------------------|
| Capacity (ISO 9246) | 4.5 m ³ | 5.9 yd ³ |
| 7 Width across End Bits | 4.000 m | 13.12 ft |
| Width without End Bits | 3.890 m | 12.76 ft |
| Width across End Bits (Blade Angled) | 3.655 m | 11.99 ft |
| Width without End Bits (Blade Angled) | 3.554 m | 11.66 ft |
| Maximum Blade Angle | 24.1 degrees | |
| 8 Height | 1.312 m | 4.30 ft |
| 9 Dig Depth | 0.698 m | 27.5 in |
| 10 Lift Height | 1.131 m | 44.5 in |
| 11 Maximum Tilt at Blade Corner | 0.625 m | 24.6 in |
| Maximum Tilt Angle | 9 degrees | |
| Pitch Adjustment | +3.1/-2.9 degrees | |
| 12 Length of Machine (Blade Straight) | 5.662 m | 18.58 ft |
| Length of Machine (Blade Angled) | 6.430 m | 21.10 ft |
| Weight (Blade) | 1520 kg | 3,351 lb |

D6/D6 XE Heavy Duty/Forestry Specifications

D6/D6 XE Heavy Duty/Forestry Features

- 1) Single plane cooling system with automatic reversing fan aids cleanout. High debris engine air filtration system extends filter life.
- 2) Forestry cab with impact resistant polycarbonate doors for added impact resistance without the use of door screens for unobstructed visibility.
- 3) Forestry (closed) sweeps provide further protection for the operator and machine with an enclosed canopy over the cab and a perforated canopy over the hood for protection while allowing upward visibility. Optional open sweeps are also available for applications where a canopy is not desired.
- 4) Side and rear screens help further protect the operator and machine from debris. Hinged screens provide easy access to windows for cleaning and maintenance.



- 5) High debris seals offer additional protection around fenders, fuel tank, radiator guard and rear hood support. Provides a seal across the top, rear of the case to prevent debris entry.
- 6) Heavy duty bottom guards and fuel tank guard to help shield major machine components. Sealed bottom guards available on push arm machines.
- 7) Heavy Duty Extended Life (HDXL) undercarriage. Track bushings can be turned and re-sealed mid-life. Press-fit bushings and PPR2 pin retention are particularly well suited for impact applications like forestry.
- 8) Quick access cab floor option offers tool-less access to the floor plate opening.
- 9) 12 premium LED lights with light guards provide 360-degree light coverage.
- 10) Heavy duty grab handles aid access/egress.

D6/D6 XE Heavy Duty/Forestry Specifications

Dimensions – Rear Attachments

Add the following to the total length of the machine when these rear attachments are installed.

| | | Winch | | Ripper | | Drawbar or Counterweight* | | Striker Box | |
|---------------------------|--------------------|--------|---------|---------|---------|---------------------------|--------|-------------|---------|
| Push Arm and Angle Dozers | D6, D6 LGP (30 in) | 441 mm | 17.4 in | 1179 mm | 46.4 in | 249 mm | 9.8 in | 478 mm | 18.8 in |
| | D6 LGP (36 in) | 416 mm | 16.4 in | 1154 mm | 45.4 in | 224 mm | 8.8 in | 453 mm | 17.8 in |
| VPAT Dozers | | 416 mm | 16.4 in | 1154 mm | 45.4 in | 224 mm | 8.8 in | 453 mm | 17.8 in |

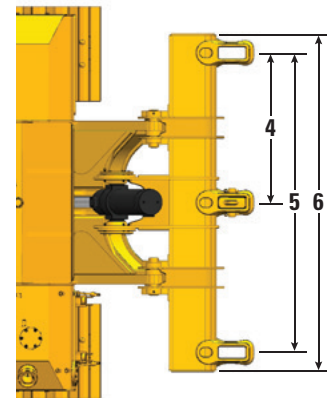
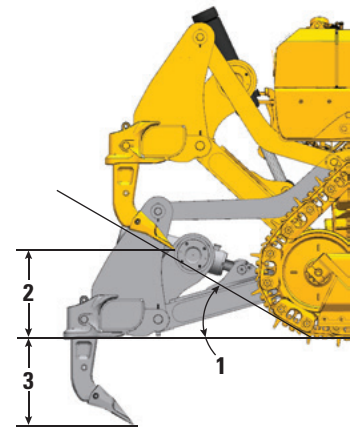
*Drawbar weight 119 kg (262 lb), 331 kg (730 lb) for each counterweight slab. The D6 dozer design provides improved balance. Counterweights are only recommended with heavier aftermarket blades.

Ripper

| | | |
|---|---------------------|-----------------|
| Type | Fixed Parallelogram | |
| Number of Pockets | 3 | |
| 1 Ramp Angle | 31 degrees | |
| 2 Maximum Clearance Raised (under tip) | 664 mm | 26.1 in |
| 3 Maximum Penetration | 571 mm | 22.5 in |
| 4 Pocket Spacing | 1000 mm | 39.4 in |
| 5 Shank Gauge | 2000 mm | 78.8 in |
| Shank Section | 74 mm × 175 mm | 2.9 in × 6.9 in |
| 6 Overall Beam Width | 2190 mm | 86 in |
| Beam Cross Section | 219 mm × 304 mm | 8.8 in × 12 in |
| Maximum Penetration Force* | 68.8 kN | 15,470 lbf |
| Pryout Force | 126 kN | 28,350 lbf |
| Ripper Weight | | |
| With One Shank | 1550 kg | 3,417 lb |
| Each Additional Shank | 73 kg | 161 lb |

Specifications based on D6 tractor configuration with Heavy Duty undercarriage, MS shoes, and straight ripper shanks.

*May vary based on configuration and machine weight.



Blade Cutting Edges

Cat FirstCut™ cutting edges are available for Semi-Universal (SU) blades. FirstCut edges provide superior penetration in tough compacted, rocky or frozen soils resulting in up to 35% larger payload mass and up to 17% improvement in productivity. Consult with your Cat dealer for more benefits and details.

D6/D6 XE Heavy Duty/Forestry Specifications

Winches

The D6 and D6 XE expand industry-leading winch capability with the introduction of available high pressure (27 600 kPa/4,000 psi) hydraulics capable of powering high performance hydraulic winches. These winches provide exceptional controllability for applications that require precise load placement. The D6 retains compatibility with PTO-driven winches for maximum power and efficiency. Winches of both styles are available from Caterpillar for factory or dealer installation, and integrate with the tractor's electronic and control system.

| Tractor Model | D6 | | | | D6 XE | |
|------------------------------------|------------------|--------------------|-----------------------|--------------------|------------------|--------------------|
| | PA56 (Low Speed) | | PA56 (Standard Speed) | | PA85 | |
| Winch model | PA56 (Low Speed) | | PA56 (Standard Speed) | | PA85 | |
| Winch Drive | PTO Mechanical | | PTO Mechanical | | Hydraulic | |
| Control | Electrical | | Electrical | | Electrical | |
| Operating Weight* | 1582 kg | 3,487 lb | 1582 kg | 3,487 lb | 1530 kg | 3,374 lb |
| Oil Capacity | 43.5 L | 11.5 gal | 43.5 L | 11.5 gal | 19 L | 5 gal |
| Increased Tractor Length | | | | | | |
| Standard/LGP | 516 mm | 20.4 in | 516 mm | 20.4 in | 516 mm | 20.4 in |
| LGP (36 in) | 365 mm | 14.4 in | 365 mm | 14.4 in | 365 mm | 14.4 in |
| Drum Diameter | 254 mm | 10 in | 254 mm | 10 in | 254 mm | 10 in |
| Rope Diameter | | | | | | |
| Recommended | 22 mm | 0.88 in | 22 mm | 0.88 in | 22 mm | 0.88 in |
| Optional | 25 mm | 1.0 in | 25 mm | 1.0 in | 25 mm | 1.0 in |
| Drum Working Capacity | | | | | | |
| 22 mm (0.88 in) | 55 m | 180 ft | 55 m | 180 ft | 55 m | 180 ft |
| 25 mm (1.0 in) | 50 m | 163 ft | 50 m | 163 ft | 50 m | 163 ft |
| Cable Ferrule Size (O.D. × Length) | 54 mm × 67 mm | 2.1 in × 2.6 in | 54 mm × 67 mm | 2.1 in × 2.6 in | 54 mm × 67 mm | 2.1 in × 2.6 in |
| Maximum Bare Drum | | | | | | |
| Line Pull** | 399 kN | 89,800 lb | 399 kN | 89,800 lb | 378 kN | 85,000 lb |
| Line Speed*** | 17 m/min | 57 ft/min | 33 m/min | 107 ft/min | 23 m/min | 77 ft/min |
| Maximum Full Drum**** | | | | | | |
| Line Pull** | 399 kN | 89,800 lb | 399 kN | 89,800 lb | 220 kN | 49,500 lb |
| Line Speed*** | 29 m/min | 94 ft/min | 55 m/min | 179 ft/min | 40 m/min | 132 ft/min |

*Operating Weight includes winch, mounting hardware, oil, and recommended wire rope.

**Maximum line pull is lesser of calculated line pull at maximum tractor PTO output torque/hydraulic power or catalog breaking strength of maximum size new IWRC IPS wire rope.

***Maximum line speed is calculated on-load line speed at maximum tractor engine PTO speed or maximum hydraulic power.

****Full drum as defined by SAE J1158.

D6/D6 XE Heavy Duty/Forestry Specifications

Track Shoes

Some track shoes not available in all regions. Please consult your Cat dealer for details.

| | Moderate Service | Extreme Service | Extreme Service Trapezoidal | Self Cleaning | Quad/Quad Ready |
|---|------------------|-----------------|-----------------------------|---------------|-----------------|
| Heavy Duty Extended Life (HDXL) | | | | | |
| D6/D6 XE – 42 Link | | | | | |
| 560 mm (22 in) | ✓ | ✓ | ✓ | | |
| 610 mm (24 in) | ✓ | ✓ | ✓ | | |
| 610 mm (24 in) | | | Heavy Duty | | |
| D6 LGP/D6 XE LGP – 42 Link | | | | | |
| 610 mm (24 in) | ✓ | ✓ | | | |
| 760 mm (30 in) | ✓ | ✓ | ✓ | | |
| D6 LGP/D6 XE LGP (36 in) – 45 Link | | | | | |
| 610 mm (24 in) | ✓ | ✓ | ✓ | | |
| 760 mm (30 in) | ✓ | ✓ | ✓ | | |
| 915 mm (36 in) | ✓ | ✓ | ✓ | | ✓ |
| 1000 mm (39 in) | | | | HD/HDXL | |
| D6 VPAT/D6 XE VPAT – 45 Link | | | | | |
| 610 mm (24 in) | ✓ | ✓ | | | |
| D6 LGP VPAT/D6 XE LGP VPAT– 46 Link | | | | | |
| 610 mm (24 in) | ✓ | ✓ | ✓ | | |
| 660 mm (26 in) | ✓ | | | | |
| 710 mm (28 in) | ✓ | | | | |
| 760 mm (30 in) | ✓ | ✓ | ✓ | | |
| D6 LGP VPAT/D6 XE LGP VPAT (36 in) – 46 Link | | | | | |
| 760 mm (30 in) | ✓ | ✓ | ✓ | | |
| 915 mm (36 in) | ✓ | ✓ | ✓ | | ✓ |
| Cat Abrasion | | | | | |
| D6/D6 XE – 42 Link | | | | | |
| 560 mm (22 in) | ✓ | ✓ | | | |
| 610 mm (24 in) | ✓ | ✓ | | | |
| D6 LGP/D6 XE LGP – 42 Link | | | | | |
| 610 mm (24 in) | ✓ | | | | |
| 760 mm (30 in) | ✓ | ✓ | | | |
| D6 LGP/D6 XE LGP (36 in) – 45 Link | | | | | |
| 760 mm (30 in) | ✓ | ✓ | | | |
| 915 mm (36 in) | ✓ | ✓ | | | |
| D6 VPAT/D6 XE VPAT – 45 Link | | | | | |
| 610 mm (24 in) | ✓ | ✓ | | | |
| D6 LGP VPAT/D6 XE LGP VPAT– 46 Link | | | | | |
| 660 mm (26 in) | ✓ | | | | |
| 710 mm (28 in) | ✓ | | | | |
| 760 mm (30 in) | ✓ | ✓ | | | |
| D6 LGP VPAT/D6 XE LGP VPAT (36 in) – 46 Link | | | | | |
| 760 mm (30 in) | ✓ | ✓ | | | |
| 915 mm (36 in) | ✓ | ✓ | | | |

D6/D6 XE Heavy Duty/Forestry Specifications

Air Conditioning System

The air conditioning system on this machine contains the fluorinated greenhouse gas refrigerant R134a (Global Warming Potential = 1430). The system contains 1.36 kg of refrigerant which has a CO₂ equivalent of 1.946 metric tonnes.

Advanced Cabin Filtration

Operator Cabin

- Distributed HVAC ducting with automatic temperature control and blower speed provides ultimate operator comfort with less user input.
- Reduced maintenance of the condenser core with automatic reversing fans.
- Cat Advanced Cabin Filtration is standard.

Cat Advanced Cabin Filtration

- Operator protection from respirable particulate (0.3-10 micron size).
- Sustainably pressurized cab (US Silica compliant).
- Reduced maintenance with longer life, high efficiency filters.
- Protection for all cabin components: electronics, etc.
- Helps meet U.S. Occupational Safety and Health Administration Silica Rule Table 1 requirements for operator cabs.
- Multi-tiered filter offerings for optional efficiency upgrades. Contact Cat dealer for availability.
 - MERV 16 – Standard Equipment
 - HEPA
 - Activated Carbon + HEPA
 - ABEK1 + HEPA

Standards

Rollover Protective Structure (ROPS)/ Falling Object Protective Structure (FOPS)

- ROPS meets ISO 3471:2008, FOPS meets ISO 3449:2005 Level II.

Brakes

- Brakes meet the International Standard ISO 10265:2008.

Sound Level Information

Hearing protection may be needed when the machine is operated with an open operator station, in a noisy environment, with a cab that is not properly maintained, or when the doors and windows are open for extended periods of time.

| Sound Level | | | Test Method |
|-------------------------------|-------|------------|--------------------------------|
| Operator Sound Pressure Level | D6 | 77 dB(A)* | “ISO 6396:2008” ⁽¹⁾ |
| | D6 XE | 76 dB(A)* | |
| Exterior Sound Power Level | D6 | 113 dB(A) | “ISO 6395:2008” ⁽²⁾ |
| | | 111 dB(A)* | “ISO 6395:1988” ⁽²⁾ |
| | D6 XE | 111 dB(A) | “ISO 6395:2008” ⁽²⁾ |
| | | 111 dB(A)* | “ISO 6395:1988” ⁽²⁾ |

*Including machines required to meet applicable regional regulations of Ukraine, United Kingdom, and Countries that Adopt the “EU Directives”; or machines equipped with the sound-suppression package.

⁽¹⁾The measurement was conducted at 70% of the maximum engine cooling fan speed. The sound level may vary at different engine cooling fan speeds. The measurement was conducted with the cab doors and the cab windows closed. The cab was properly installed and maintained.

⁽²⁾The measurement was conducted at 70% of the maximum engine cooling fan speed. The sound level may vary at different engine cooling fan speeds.

The sound levels listed above include both measurement uncertainty and uncertainty due to production variation.

Dozer Technology Features

Assist technology features help operators of varied experience levels get the job done faster and more accurately. Grade and Command offerings help further enhance your productivity, efficiency and job site safety.

The cab is Third Party Grade Control Ready, equipped with CAN interface, harness pass throughs and mounting features to make it easier to install the grade control system of your choice.

ARO with Assist Package

| | |
|-------------------------------|--|
| Attachment Ready Option (ARO) | ARO provides wiring and mounting provisions for dealer installation of Grade with 3D, AccuGrade, UTS, or other grade control systems. |
| Cat Grade with Slope Assist™ | Slope Assist automatically maintains pre-established blade position without a GNSS/GPS signal – no additional hardware or software needed. For machines with 3D, operators can easily switch back and forth from full 3D automatics to Slope Assist. |
| Steer Assist | Steer Assist automates track and blade tilt steering. Helps reduce operator fatigue by automatically maintaining straight travel with light loads or heavy loads on flat ground and cross slopes. No GNSS/GPS required. |
| Stable Blade | Stable Blade works seamlessly with operator inputs to help produce a smoother surface when operating manually. |
| Slope Indicate | Slope Indicate is included in the main machine display and shows side slope and uphill/downhill grades to help operators with slope work. |
| Blade Load Monitor | Blade Load Monitor gives you real-time feedback on current load versus the optimal blade load based on your ground conditions. Actively monitors machine load and track slip to help you reach optimal pushing capacity. ¹ |
| Traction Control | Traction Control automatically reduces track slip to save you time, fuel and track wear. ¹ |
| AutoCarry™ | AutoCarry automates blade lift to help you maintain consistent blade load and help reduce track slip. ¹ |

Grade 3D with Assist Package

Includes all features from the ARO with Assist Package listed above, plus:

| | |
|-------------------------------------|---|
| Cat Grade with 3D | Factory integrated Cat Grade with 3D uses GNSS/GPS to control the blade so you can get to design plan faster. Low profile antennas are integrated into the cab roof and GNSS/GPS receivers are mounted inside the cab for better protection. ² |
| Steer Assist 3D | Automatically follow guidance lines from site design plans (or Infield designs) under light load or heavy load. ² |
| Dedicated Touchscreen Grade Display | Full-color Grade operator interface is intuitive and easier to use. The 254 mm (10 in) touchscreen uses an Android OS platform and operates like a smart phone. |

Remote Control/Cat Command

| | |
|--|--|
| Remote Control Ready Cab (Standard) | Cab is Remote Control Ready from the factory with external connector for dealer installation of the Cat Command remote control system. |
| Command for Dozing ² (Optional) | Cat Command remote control technology provides full dozer maneuverability from a safe distance when working in hazardous environments. Command offers the choice of line-of-sight consoles or long-distance operator stations (non-line-of-sight). |

¹Feature not operational indoors or in areas where a GNSS/GPS signal is not available.

²Requires Software Enabled Attachment (SEA) installation when not configured from the factory.

Note: Grade and Assist technologies, except Slope Indicate, Blade Load Monitor and Traction Control, are not compatible with Angle blades or specialty blades from Cat Work Tools. Please consult with your Cat dealer for details.

D6/D6 XE Heavy Duty/Forestry Standard and Optional Equipment

Standard and Optional Equipment

Standard and optional equipment may vary. Consult your Cat dealer for details.

| | Standard | Optional | | Standard | Optional |
|---|----------|----------|--|----------|----------|
| POWER TRAIN | | | CAT TECHNOLOGY (continued) | | |
| Fully-automatic 4-speed Transmission with Lock Up Clutch (LUC) torque divider | D6 | | Product Link, Cellular | ✓ | |
| XE Electric Drive Power Train | D6 XE | | Product Link – Dual Cellular/Satellite | | ✓ |
| Differential Steering System | ✓ | | Remote Flash/Troubleshoot | ✓ | |
| Cat C9.3B diesel engine with turbo, with engine mounted aftertreatment to meet U.S. EPA Tier 4 Final, EU Stage V, Korea Tier 5 emission standards | ✓ | | Grade Connectivity | | ✓ |
| Cat C9.3B diesel engine with thermal shield and liquid cooled turbo | | ✓ | Operator ID | ✓ | |
| Engine air precleaner with dust ejection | ✓ | | Machine Security – Passcode | ✓ | |
| Engine air precleaner with dust ejection and screen for high debris applications | | * | Machine Security – Bluetooth | | ✓ |
| Double reduction planetary final drives | ✓ | | Remote Control Ready | ✓ | |
| Double reduction planetary final drives, guarded | | ✓ | Cat Command for Dozing | | ✓ |
| Automatic ether starting aid | ✓ | | OPERATOR ENVIRONMENT | | |
| Electric fuel priming pump | ✓ | | Fully redesigned Heavy Duty cab with Integrated ROPS and FOPS, impact resistant polycarbonate doors, sliding windows, with Cat Advanced Cabin Filtration | | ✓ |
| Electronic parking brake | ✓ | | Full-color 254 mm (10 inch) liquid crystal touch screen display | ✓ | |
| Engine air filter with electronic service indicator | ✓ | | Integrated rearview camera | ✓ | |
| Fuel water separator with electronic service indicator | ✓ | | Joystick control – ARO | | ✓ |
| Jacket water heater, 110V OR 220V based on sales region | ✓ | | Adjustable operator controls/armrests | ✓ | |
| Diesel Exhaust Fluid (DEF) System – Electronic fill indicator, heated lines/tank | ✓ | | Cloth seat with mechanical adjustable lumbar support | ✓ | |
| CAT TECHNOLOGY | | | Deluxe leather heated/ventilated seat with electronic adjustable lumbar support | | ✓ |
| Slope Indicate | ✓ | | Cab mounted modular HVAC system with automatic reversing fans. Automatic temperature and blower control with distributed ducting. | ✓ | |
| ARO with Assist Package | | ✓ | Cat Advanced Cabin Filtration with powered precleaner with MERV 16, HEPA, and Activated Charcoal options | | ✓ |
| – Attachment Ready Option (ARO) | | | Viscous cab mounts for improved ride | ✓ | |
| – Slope Assist | | | Entertainment radio with Bluetooth® and microphone | ✓ | |
| – Steer Assist | | | USB and AUX ports | ✓ | |
| – Stable Blade | | | Enhanced Cab Storage Solutions | ✓ | |
| – Blade Load Monitor | | | Adjustable foot pegs | ✓ | |
| – Traction Control | | | Quick opening floor plate | | ✓ |
| – AutoCarry | | | Screen ready, side and rear | ✓ | |
| Grade 3D with Assist Package | | ✓ | Operator presence switch | ✓ | |
| – Full-color 10-inch (254 mm) touchscreen grade display | | | | | |
| – Steer Assist 3D | | | | | |
| – Grade receivers and antennas | | | | | |
| – Grade Software Enabled Attachment (SEA) | | | | | |
| – ARO with Assist features | | | | | |
| Third Party Grade Control Ready Cab | ✓ | | | | |
| Compatibility with radios and base stations from Trimble, Topcon, and Leica | ✓ | | | | |
| Capability to install 3D grade systems from Trimble, Topcon, and Leica | ✓ | | | | |

*Recommended for Forestry/Heavy Duty.

(continued on next page)

D6/D6 XE Heavy Duty/Forestry Standard and Optional Equipment

Standard and Optional Equipment *(continued)*

Standard and optional equipment may vary. Consult your Cat dealer for details.

| | Standard | Optional | | Standard | Optional |
|---|----------|-------------|---|----------|----------|
| UNDERCARRIAGE | | | HYDRAULICS | | |
| Structurally improved track roller frame designed to allow conversion between HD and S1 | ✓ | | Load sensing hydraulics – dozer lift and tilt | ✓ | |
| Undercarriage with 8 bottom rollers | ✓ | | Independent steering hydraulics | ✓ | |
| Undercarriage with 10 bottom rollers for fine grading applications | | ✓ | Ripper ready rear hydraulics | D6 | |
| Partially guided undercarriage | | ✓ | Ripper and winch ready rear hydraulics | D6 XE | D6 |
| Fully guided undercarriage | | ✓ | Single axis ripper control | ✓ | |
| Heavy Duty (HDXL with DuraLink™) | ✓ | | Dual axis ripper/winch control | | ✓ |
| Cat Abrasion track | | ✓ | Hydraulic automatically reversing, zero speed capable cooling fan | ✓ | |
| Moderate service track shoes (see chart on page 46) | ✓ | | Electronic Hydraulic lockout switch | ✓ | |
| Extreme service track shoes (see chart on page 46) | | ✓ | ELECTRICAL | | |
| Carrier roller | ✓ | | Lights – 6 LED | + | |
| Hydraulically adjustable track | ✓ | | Premium lights with guards, 12 LED for 360 degree light coverage | ✓ | |
| Replaceable sprocket rim segments | ✓ | | Backup alarm | ✓ | |
| BLADES | | | Integrated beacon warning light (does not impact shipping height) | | ✓ |
| Semi-Universal, ARO mounts | | ✓ | Communication radio ready kit | + | |
| Semi-Universal, LGP with ARO mounts | | ✓ | Converter: 15 Amp, 12V outlet | ✓ | |
| Straight blade, LGP with ARO mounts | | ✓ | Diagnostic connector | ✓ | |
| VPAT, ARO mounts | | ✓ | Forward warning horn | ✓ | |
| VPAT, LGP with ARO mounts | | ✓ | Fuse panel and main power relay located inside cab | ✓ | |
| Foldable VPAT, LGP with ARO mounts | | EU only | +Included in Heavy Duty/Forestry package. | | |
| Angle blade | | NA only | <i>(continued on next page)</i> | | |
| Caterpillar Performance cutting edges | | Dealer only | | | |

D6/D6 XE Heavy Duty/Forestry Standard and Optional Equipment

Standard and Optional Equipment (continued)

Standard and optional equipment may vary. Consult your Cat dealer for details.

| | Standard | Optional | | Standard | Optional |
|---|----------|----------|--|----------|----------------|
| SERVICE AND MAINTENANCE | | | ATTACHMENTS | | |
| 30-minute cab removal | ✓ | | Drawbar | ✓ | |
| Ecology drains | ✓ | | High lift multi-shank ripper with straight or curved shanks | | ✓ |
| Ecology drains with high speed oil power train and engine oil change | | ✓ | Lightweight rear tow point | | ✓ |
| Ground level service center with remote electrical disconnect, access light, secondary shutdown switch and hour meter | ✓ | | Striker bar box | | ✓ |
| Fuel tank, 341 L (90 gal) | ✓ | | Counterweights (not recommended unless using heavier aftermarket blades) | | ✓ |
| Fuel tank, 341 L (90 gal), fast fill ready | D6 XE | D6 | PACCAR PA56 winch, low speed PTO | | D6 |
| Wiggins style fast fill nozzle | | ✓ | PACCAR PA85 winch, variable speed hydraulic | | ✓ |
| Mounting provisions for grease gun, shovel, and fire extinguisher | ✓ | | PACCAR PA56 winch, standard speed PTO | | D6 Dealer only |
| Perforated radiator doors, louvered and hinged | ✓ | | Allied H6H winch, variable speed hydraulic | | Dealer only |
| Rear access ladder | ✓ | | Fairlead Assembly; 3-roller, fits PA55, PA56, and PA85 winches | | ✓ |
| Rear work light | | ✓ | Retrofit kit (4th roller); fits PA55, PA56, and PA85 winches | | ✓ |
| Refilling fuel pump | | EU only | GUARDING AND SCREENS | | |
| Removable engine enclosures, perforated and hinged, with under hood work light | ✓ | | Heavy duty sealed and hinged bottom guards | + | |
| Removable engine enclosures, sound suppressed and hinged, with under hood work light | | EU only | Heavy duty sealed quick access bottom guards** | | Push Arm only |
| S-O-S SM sampling ports | ✓ | | Heavy duty grab handles | + | |
| Maintenance free equalizer bar | ✓ | | Open Sweeps guarding | | ✓ |
| Certified ISO 14567 tie off points (3) | ✓ | | Forestry Sweeps guarding with full canopy | + | |
| Vandalism protection for fluid compartments and battery box | ✓ | | Hinged rear screen | + | |
| Dedicated shipping tie downs, rear | ✓ | | Hinged side screens | + | |
| Shipping tie downs, front bracket | | EU only | Fuel tank guard (with or without fast fill) | | * |
| BATTERIES, STARTERS, ALTERNATORS AND FLUIDS | | | Guards for premium lights, front and side | ✓ | |
| 150 Amp alternator | ✓ | | Machine seals for high debris | | * |
| 150 Amp ducted alternator | | ✓ | Front and rear striker bars | | Dealer only |
| Heavy duty batteries, two maintenance-free 12V (1,400 CCA) (24V system) | ✓ | | +Included in Heavy Duty/Forestry package. | | |
| Heavy duty, 24V starter | ✓ | | *Recommended for Heavy Duty/Forestry. | | |
| Extended Life Engine coolant, -37° C (-35° F) | ✓ | | **Please check with your Cat dealer for availability dates. | | |
| Extended Life Arctic engine coolant, -51° C (-60° F) | | ✓ | | | |
| Bio hydraulic oil, -37° C (-35° F) | | EU only | | | |

For more complete information on Cat products, dealer services, and industry solutions, visit us on the web at www.cat.com

© 2022 Caterpillar
All rights reserved

Materials and specifications are subject to change without notice. Featured machines in photos may include additional equipment. See your Cat dealer for available options.

CAT, CATERPILLAR, LET'S DO THE WORK, their respective logos, "Caterpillar Corporate Yellow," the "Power Edge" and Cat "Modern Hex" trade dress as well as corporate and product identity used herein, are trademarks of Caterpillar and may not be used without permission.

AEXQ2470-05 (09-2022)
Replaces AEXQ2470-04
Build Number: 20B
(Aus-NZ, Chile, Europe,
N Am, S Korea, Turkey)

